

致力为客户创造最大价值



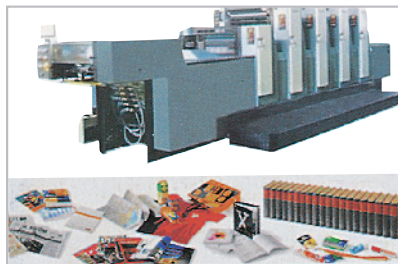
新立盈®



- ★ 蜗轮蜗杆减速机
- ★ 无级变速机
- ★ 微型调速电机
- ★ 微型直流无刷减速电机

## 应用行业 Application industry

印刷机和制造机



机床和制造系统



机器人技术、自动化技术和机械手技术



纺织机械



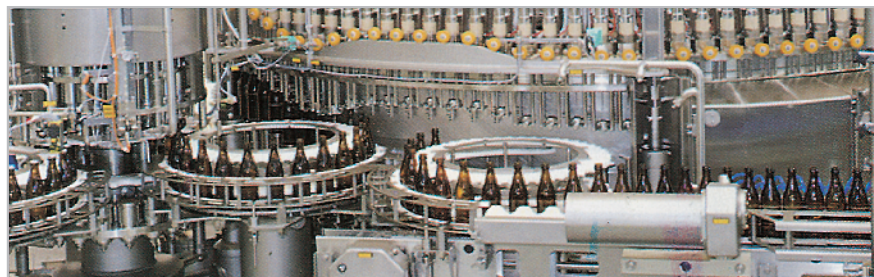
## 公司简介

公司主要从事减速机的研发，生产，为客户提供最优质的产品服务。公司非常注重产品的适用性和可靠性，实施严格的质量控制，为了满足当今越来越苛刻的生产使用需求，公司不断创新，研发出适用于不同工况的减速机以最大限度满足市场需求。

公司一直以传承，创新，创造作为企业发展理念，我们始终坚信品质为企业生存的根本，且一直保持着对更高品质的追求，为客户的客户提供放心高质的产品，一个产品的生命，其价值的体现便是满意每一位使用他的客户，在此，我们真诚感谢您在新立盈的成长过程中给予我们的信任及陪伴，为了您的选择，我们会尽最大的努力给您提供满意的产品，在未来的日子里公司将继续创新，为您提供终极解决方案。

公司将一直秉承这些理念陪伴您走下去。

自动化生产线



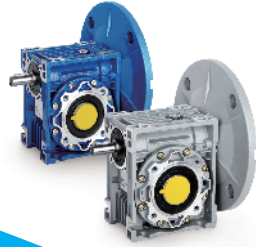
# 目录索引

RV产品



Page. 13-14

RV-E产品



Page. 15-16

NRV产品



Page. 17-18

NRV-E产品



Page. 19-20

UDL-B3产品



Page. 46-47

UDL-B5产品



Page. 48-49

DRV产品



Page. 57-58

UDL+NMRV产品



Page. 64-65

PC+NMRV产品



Page. 71-72

交、直流减速电动机



Page. 85-115

微型直流无刷减速电机



Page. 116-143

## 型号的选择方法 PRODUCT NUMBER CODE

### 电动机 Motor

5   I   K   40   R   GN   -   C   F  
 ①   ②   ③   ④   ⑤   ⑥   ⑦   ⑧

①	电动机的尺寸 Motor Frame Size	0: 42mm 2: 60mm 3: 70mm 4: 80mm 5: 90mm 6: 104mm
②	类型名称 Motor Type	I : 感应电动机, Induction Motor R : 可逆电动机, Reversible Motor T : 转矩电动机, Torque Motor
③	系列名称 Series	K : K系列 K Series
④	输出功率 Output Power (W)	(例 Example)40 : 40W
⑤	R : 表示带调速电动机 ; 无 : 表示未带 The Suffix "R" After The Output Power Means Speed Adjustable Motor.	
⑥	转轴形状 Motor Shaft Type	GN : GN型齿轮轴 GN Type : Pinion Shaft GU : GU型齿轮轴 GU Type : Pinion Shaft A : 圆轴型 Round Shaft A1 : 键槽型 Keyway
⑦	电源电压 极数 Voltage Poles	A : 单相 Single-Phase 110V50/60Hz 4P H : 单相 Single-Phase 220/230V60Hz 4P B : 单相 Single-Phase 110V50Hz 2P S : 三相 Three-Phase 200/220/230V50/60Hz 4P C : 单相 Single-Phase 220/230V50Hz 4P S3 : 三相 Three-Phase 380/400/415V50/60Hz 4P D : 单相 Single-Phase 220V50Hz 2P T : 三相 Three-Phase 200/220/230V50/60Hz 2P E : 单相 Single-Phase 110V/120V60Hz 4P T3 : 三相 Three-Phase 380/400/415V50/60Hz 2P
⑧	T : 带端子箱型 Terminal Box Type F : 带风扇 W/Fan M : 带刹车	

### 方型减速器 Square Shape Gearbox

5   GN   50   K  
 ①   ②   ③   ④

①	减速机安装尺寸 Gearhead frame size	2: 60mm 4: 80mm 5: 90mm 6: 104mm
②	类型 Gear type	GN: GN型齿轮 GN type gear GU: GU型齿轮轴 GU type gear
③	减速比 Gear ratio	(例e.g) 50: 减速比 50: Reduction ratio
④	轴承种类 Bearing type	K: 滚珠轴承 (对GU型方箱体标注为KB) K: Ball bearing (on the GU type square box marked as KB)

### L型减速器 L Type Gearbox

5   GN   50   RC  
 ①   ②   ③   ④

①	减速机安装尺寸 Gearhead frame size	2: 60mm 4: 80mm 5: 90mm 6: 104mm
②	类型 Gear type	GN: GN型齿轮轴 Type GN gear shaft GU: GU型齿轮轴 Type GU gear shaft
③	减速比 Gear ratio	(例e.g) 50: 减速比 50: Reduction ratio
④	减速箱类型 Bearing type	RC: 弧锥齿空心轴输出 Hollow shaft output of spiral bevel gear RT: 弧锥齿实心轴输出 Solid shaft output of spiral bevel gear

# 调速电动机 SPEED ADJUSTABLE MOTOR



6W     60mm

**规格 Specs 连续额定 Cont. Rated**

型号Model · 类型 Type 导线型 Lead Wire Type		最大 输出功率 Output power W	电压 Voltage V	频率 Frequency Hz	调速范围 Speed Control Range r/min	容许转矩 Allowance Torque		启动转矩 Starting Torque mN.m	电流 Current A	电容器容量 Capacitor μF
齿轮轴型 Pinion Shaft	圆轴型 Round Shaft					1200r/min mN.m	90r/min mN.m			
2IK6RGN-A	2IK6RA-A	6	1ph 100	50	90~1350	50	30	35	0.240	3.5
					90~1650	50	29	35	0.250	
2IK6RGN-E	2IK6RA-E	6	1ph 110	60	90~1650	50	29	30	0.160	2.0
			1ph 120						0.180	
2IK6RGN-C	2IK6RA-C	6	1ph 220	50	90~1350	55	29	35	0.130	0.8
			1ph 230						0.110	
2IK6RGN-H	2IK6RA-H	6	1ph 220	60	90~1650	55	29	35	0.140	0.8
			1ph 230						0.120	

- 各种安全规格以电动机铭牌上的型号取得认证。  
When the motor is approved under various safety standards, the model name on the nameplate is the approved model name.
- 注：“-A”型号中电压为110V时，配置电容器容量以实际铭牌为准。  
Note:“-A” it means the voltage 110V,the assembly capacitor vaule it is according the labe.

## 种类 Type

● 电动机 Motor

机型 Type	型号Model	
	齿轮轴型 Pinion Shaft	圆轴型 Round Shaft
导线型 Lead Wire Type	2IK6RGN-A	2IK6RA-A
	2IK6RGN-E	2IK6RA-E
	2IK6RGN-C	2IK6RA-C
	2IK6RGN-H	2IK6RA-H

● 平行轴减速器 (另售) Parallel Shaft Gearhead (Sold Separately)

减速器种类 Gearhead Type	减速器型号 Gearhead Model	减速比 Gear Ratio
长寿命●低噪音 Long Life ● Low Noise	2GN□K	3、3.6、5、6、7.5、9、 12.5、15、18、25、30、 36、50、60、75、90、 100、120、150、180、200
	2GN10XK (中间减速器 Decimal Gearhead)	

- 减速器型号的□中为减速比的数值  
Enter the gear ratio in the box ( □ ) within the model name

## 装有减速器时的容许转矩 Gear Motor-Torque Table

- 减速器另售-中间减速器另售。  
Gearhead and mid-gearbox can be sold separately.
- 减速品型号的□中为减速比的数值。  
Enter the gear ratio in the box(□) within the model name.
- □色表示与电动机同一方向运转，其他则为相反方向。  
The colored background □ indicates the same rotating direction of the motor while the rotating direction of others are opposite.
- 转速是以电动机的同步转速 ( 50Hz : 1500r/min、60Hz : 1800r/min ) 为基准除以减速比而算出来的数值。实际转速将随负载大小变化所示数值减少2%~20%左右。  
The speed is calculated by dividing the motor's synchronous speed ( 50Hz : 1500r/min、60Hz : 1800r/min ) by the gear ratio. The actual speed is 2%~20% less than the displayed value, depending on the size of the load.
- 希望以大于下表的减速比进行进一步减速时，可在电动机与减速机之间安装减速比为10的中间减速机。这时的容许转矩为3N·m。  
To reduce the speed beyond the gear ratio in the table, attach a decimal gearhead(gear ratio:10)between the gearhead and motor. In that case, the permissible torque is 3N·m.

## 容许力矩单位 Allowance Torque Unit : 上段 Upside ( N.m ) /下段 Belowside ( kgf.cm )

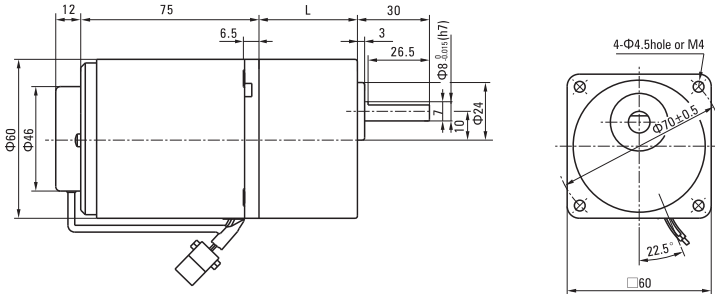
类型 Type 电动机/减速机 Motor/Gearhead	减速比 Gear Ratio		3	3.6	5	6	7.5	9	12.5	15	18	25	30	36	50	60	75	90	100	120	150	180	200
	转速 Speed r/min	50Hz	500	417	300	250	200	166	120	100	83	60	50	41	30	25	20	16	15	12.5	10	8.3	7.5
2IK6RGN-A 2IK6RGN-E 2IK6RGN-C 2IK6RGN-H		2GN□K	60Hz	600	500	360	300	240	200	144	120	100	72	60	50	36	30	24	20	18	15	12	10
	50Hz		0.12	0.14	0.19	0.23	0.29	0.35	0.49	0.58	0.70	0.88	1.1	1.3	1.6	1.9	2.4	2.9	3	3	3	3	3
	60Hz	0.10	0.12	0.16	0.19	0.24	0.29	0.41	0.49	0.58	0.73	0.88	1.1	1.3	1.6	2.0	2.4	2.6	3	3	3	3	3
		1.02	1.22	1.63	1.94	2.45	2.96	4.18	5.0	5.92	7.45	8.98	11.2	13.3	16.3	20.4	24.5	26.5	30	30	30	30	30

## 外形图 (单位 mm) Dimensions (Unit mm)

减速器附有安装用螺丝 Mounting screws are included with gearhead.

### ● 导线型 Lead Wiring Type

重量 Weight : 电动机 Motor : 1.1kg      减速器 Gearhead : 0.5kg

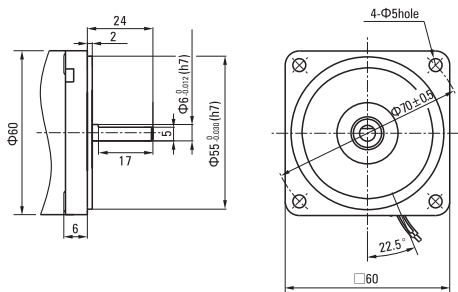


电动机型号 Motor Model	减速器型号 Gearhead Model	减速比 Gear Ratio	L1
2IK6RGN-A 2IK6RGN-E 2IK6RGN-C	2GN□K	3~18	32
2IK6RGN-H		25~200	41.5

● 减速器型号的□中为减速比的数值  
Enter the gear ratio in the box (□) within the model name

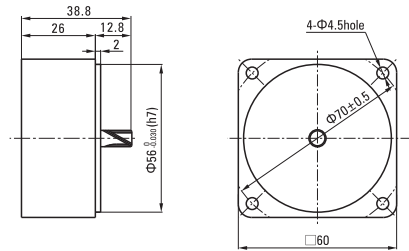
### ● 圆轴型的转轴部分 Shaft Section Of Round Shaft Type

除重量及轴部外电动机外形与齿轮轴型相同。  
Excluding weight and the shaft section motor shape are the same as those of the pinion shaft type.



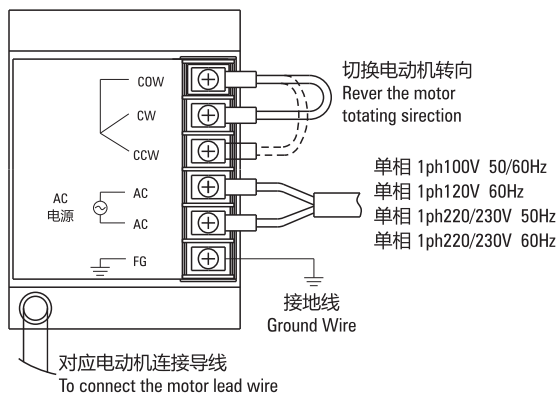
### ● 中间减速器 Decimal Gearhead

可安装在GN齿轮轴型上 Can be connected to GN pinion shaft type  
电动机外形与齿轮轴型相同  
2GN10XK  
重量 Weight : 0.24kg

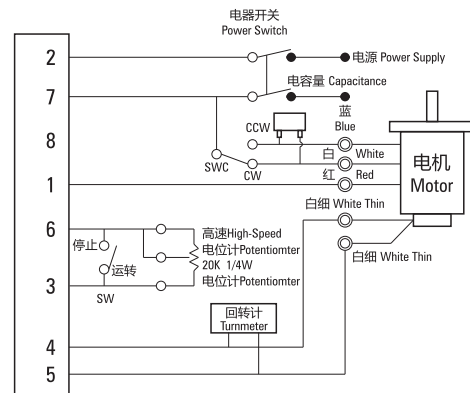


## 连接图 Wiring Diagram

US型/US Type



SS型/SS Type



# 调速电动机 SPEED ADJUSTABLE MOTOR

■ 15W □ 70mm

■ 规格 Specs 连续额定 Cont. Rated



型号Model · 类型 Type 导线型 Lead Wire Type		最大 输出功率 Output power W	电压 Voltage V	频率 Frequency Hz	调速范围 Speed Control Range r/min	容许转矩 Allowance Torque		启动转矩 Starting Torque mN.m	电流 Current A	电容器容量 Capacitor μF
齿轮轴型 Pinion Shaft	圆轴型 Round Shaft					1200r/min mN.m	90r/min mN.m			
3IK15RGN-A	3IK15RA-A	15	1ph 100	50	90~1350	120	35	55	0.35	6.0
				60	90~1650				0.33	
3IK15RGN-E	3IK15RA-E	15	1ph 110	60	90~1650	125	35	55	0.30	5.0
			1ph 120						0.32	
3IK15RGN-C	3IK15RA-C	15	1ph 220	50	90~1350	120	35	54	0.18	1.2
			1ph 230						0.20	
3IK15RGN-H	3IK15RA-H	15	1ph 220	60	90~1650	85	35	52	0.16	1.2
			1ph 230			105			0.15	

- 各种安全规格以电动机铭牌上的型号取得认证。  
When the motor is approved under various safety standards, the model name on the nameplate is the approved model name.
- 注：“-A”型号中电压为110V时，配置电容器容量以实际铭牌为准。  
Note：“-A” it means the voltage 110v,the assembly capacitor vaule it is according the labe.

## 种类 Type

### ● 电动机 Motor

机型 Type	型号Model	
	齿轮轴型 Pinion Shaft	圆轴型 Round Shaft
导线型 Lead Wire Type	3IK15RGN-A	3IK15RA-A
	3IK15RGN-E	3IK15RA-E
	3IK15RGN-C	3IK15RA-C
	3IK15RGN-H	3IK15RA-H

### ● 平行轴减速器 (另售) Parallel Shaft Gearhead (Sold Separately)

减速器种类 Gearhead Type	减速器型号 Gearhead Model	减速比 Gear Ratio
长寿命●低噪音 Long Life ● Low Noise	3GN□K	3、3.6、5、6、7.5、9、 12.5、15、18、25、30、 36、50、60、75、90、 100、120、150、180、200
	3GN10XX (中间减速器 Decimal Gearhead)	

- 减速器型号的□中为减速比的数值  
Enter the gear ratio in the box (□) within the model name

## ■ 装有减速器时的容许转矩 Gear Motor-Torque Table

- 减速器另售-中间减速器另售。  
Gearhead and mid-gearbox can be sold separately.
- 减速比型号的□中为减速比的数值。  
Enter the gear ratio in the box(□) within the model name.
- □色表示与电动机同一方向运转，其他则为相反方向。  
The colored background □ indicates the same rotating direction of the motor while the rotating direction of others are opposite.
- 转速是以电动机的同步转速 (50Hz : 1500r/min、60Hz : 1800r/min) 为基准除以减速比而算出来的数值。实际转速将随负载大小变化所示数值减少2%~20%左右。  
The speed is calculated by dividing the motor's synchronous speed (50Hz : 1500r/min、60Hz : 1800r/min) by the gear ratio. The actual speed is 2%~20% less than the displayed value, depending on the size of the load.
- 希望以大于下表的减速比进行进一步减速时，可在电动机与减速机之间安装减速比为10的中间减速机。这时的容许转矩为5N·m。  
To reduce the speed beyond the gear ratio in the table, attach a decimal gearhead(gear ratio:10)between the gearhead and motor. In that case, the permissible torque is 5N·m.

## ■ 容许力矩单位 Allowance Torque Unit : 上段 Upside ( N.m ) /下段 Belowside ( kgf.cm )

类型 Type 电动机/减速机 Motor/Gearhead	减速比 Gear Ratio	容许力矩																					
		3	3.6	5	6	7.5	9	12.5	15	18	25	30	36	50	60	75	90	100	120	150	180	200	
	转速 Speed r/min	50Hz	60Hz	50Hz	60Hz	50Hz	60Hz	50Hz	60Hz	50Hz	60Hz	50Hz	60Hz	50Hz	60Hz	50Hz	60Hz	50Hz	60Hz	50Hz	60Hz	50Hz	60Hz
3IK15RGN-A 3IK15RGN-E 3IK15RGN-C 3IK15RGN-H	3GN□K	50Hz	0.30	0.36	0.51	0.61	0.76	0.91	13	15	18	2.3	2.7	3.3	4.1	5	5	5	5	5	5	5	5
			3.06	3.67	5.20	6.22	7.75	9.28	13.2	15.3	18.3	23.4	27.5	33.7	41.8	50	50	50	50	50	50	50	50
	60Hz	0.26	0.31	0.43	0.51	0.64	0.77	1.1	1.3	1.5	1.9	2.3	2.8	3.5	4.2	5	5	5	5	5	5	5	5
		2.65	3.16	4.38	5.20	6.53	7.85	11.2	13.2	15.3	19.3	23.4	28.5	35.7	42.8	50	50	50	50	50	50	50	50

## 调速电动机 SPEED ADJUSTABLE MOTOR

■ 25W    □ 80mm



### 规格 Specs 连续额定 Cont. Rated

型号Model · 类型 Type 导线型 Lead Wire Type		最大 输出功率 Output power W	电压 Voltage V	频率 Frequency Hz	调速范围 Speed Control Range r/min	容许转矩 Allowance Torque		启动转矩 Starting Torque mN.m	电流 Current A	电容器容量 Capacitor μF
齿轮轴型 Pinion Shaft	圆轴型 Round Shaft					1200r/min mN.m	90r/min mN.m			
4IK25RGN-A	4IK25RA-A	25	1ph 100	50	90~1350	190	47	88	0.50	8.0
				60	90~1650				0.55	
4IK25RGN-E	4IK25RA-E	25	1ph 110	60	90~1650	190	50	105	0.45	7.0
			1ph 120						0.50	
4IK25RGN-C	4IK25RA-C	25	1ph 220	50	90~1350	190	47	88	0.25	1.8
			1ph 230						0.23	
4IK25RGN-H	4IK25RA-H	25	1ph 220	60	90~1650	190	45	88	0.23	1.8
			1ph 230							

- 各种安全规格以电动机铭牌上的型号取得认证。  
When the motor is approved under various safety standards, the model name on the nameplate is the approved model name.
- 注：“-A”型号中电压为110V时，配置电容器容量以实际铭牌为准。  
Note:“-A” it means the voltage 110v,the assembly capacitor vaule it is according the labe.

### 种类 Type

#### ● 电动机 Motor

机型 Type	型号Model	
	齿轮轴型 Pinion Shaft	圆轴型 Round Shaft
导线型 Lead Wire Type	4IK25RGN-A	4IK25RA-A
	4IK25RGN-E	4IK25RA-E
	4IK25RGN-C	4IK25RA-C
	4IK25RGN-H	4IK25RA-H

#### ● 平行轴减速器（另售）Parallel Shaft Gearhead (Sold Separately)

减速器种类 Gearhead Type	减速器型号 Gearhead Model	减速比 Gear Ratio
长寿命●低噪音 Long Life ● Low Noise	4GN□K	3、3.6、5、6、7.5、9、 12.5、15、18、25、30、 36、50、60、75、90、 100、120、150、180、200
	4GN10XK (中间减速器 Decimal Gearhead)	

- 减速器型号的□中为减速比的数值  
Enter the gear ratio in the box ( □ ) within the model name



## ■ 装有减速器时的容许转矩 Gear Motor-Torque Table

- 减速器另售-中间减速器另售。电动机型号的□中为表示带端子箱型的记号(T)。  
Gearhead and mid-gearbox can be sold separately. Enter the code that represents the terminal box type (T) in the box (□) within the model name.
- 减速品型号的□中为减速比的数值。  
Enter the gear ratio in the box(□) within the model name.
- 色表示与电动机同一方向运转，其他则为相反方向。  
The colored background    indicates the same rotating direction of the motor while the rotating direction of others are opposite.
- 转速是以电动机的同步转速（50Hz：1500r/min、60Hz：1800r/min）为基准除以减速比而算出来的数值。实际转速将随负载大小变化所示数值减少2%~20%左右。  
The speed is calculated by dividing the motor's synchronous speed (50Hz：1500r/min、60Hz：1800r/min) by the gear ratio. The actual speed is 2%~20% less than the displayed value, depending on the size of the load.
- 希望以大于下表的减速比进行进一步减速时，可在电动机与减速机之间安装减速比为10的中间减速机。这时的容许转矩为6N·m。  
To reduce the speed beyond the gear ratio in the table, attach a decimal gearhead(gear ratio:10)between the gearhead and motor. In that case, the permissible torque is 6N·m.

## ■ 容许力矩单位 Allowance Torque Unit：上段 Upside ( N.m ) /下段 Belowside ( kgf.cm )

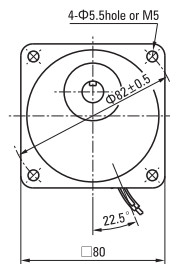
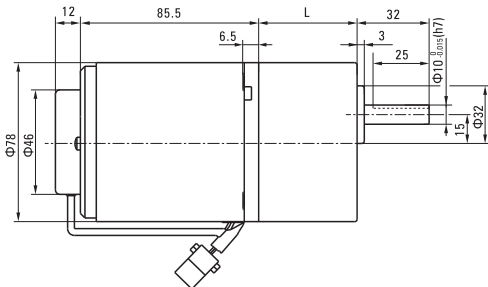
类型 Type 电动机/减速机 Motor/Gearhead	减速比 Gear Ratio																								
	转速 Speed r/min		3	3.6	5	6	7.5	9	12.5	15	18	25	30	36	50	60	75	90	100	120	150	180	200		
4IK25RGN-A 4IK25RGN-E 4IK25RGN-C 4IK25RGN-H	4GN□K	50Hz	0.49	0.58	0.81	0.97	1.2	1.5	2.0	2.4	2.9	3.7	4.4	5.3	6.6	7.9	8	8	8	8	8	8	8	8	
			5.00	5.91	8.26	9.89	12.2	15.3	20.4	24.4	29.6	37.7	44.9	54.1	67.3	80	80	80	80	80	80	80	80	80	80
		60Hz	0.40	0.48	0.67	0.80	1.0	1.2	1.7	2.0	2.4	3.0	3.6	4.3	5.4	6.5	8	8	8	8	8	8	8	8	8
			4.08	4.89	6.83	8.16	10.2	12.2	17.3	20.4	24.4	30.6	36.7	43.8	55.1	66.3	80	80	80	80	80	80	80	80	80

## ■ 外形图 (单位 mm) Dimensions(Unit mm)

减速器附有安装用螺丝 Mounting screws are included with gearhead.

### ● 导线型 Lead Wiring Type

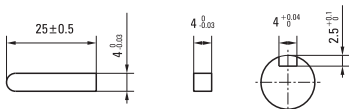
重量 Weight：电动机 Motor：1.7kg      减速器 Gearhead：0.8kg



电动机型号 Motor Model	减速器型号 Gearhead Model	减速比 Gear Ratio	L1
4IK25RGN-A 4IK25RGN-E 4IK25RGN-C 4IK25RGN-H	4GN□K	3~18	32
		25~200	43.5

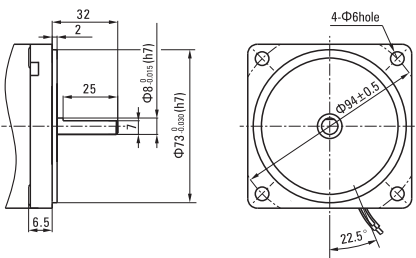
● 减速器型号的□中为减速比的数值  
Enter the gear ratio in the box (□) within the model name

### ● 键·键槽 (减速器附件) Key·Keyway(Accessory Of Gearhead)



### ● 圆轴型的转轴部分 Shaft Section Of Round Shaft Type

除重量及轴部外电动机外形与齿轮轴型相同。  
Excluding weight and the shaft section motor shape are the same as those of the pinion shaft type.

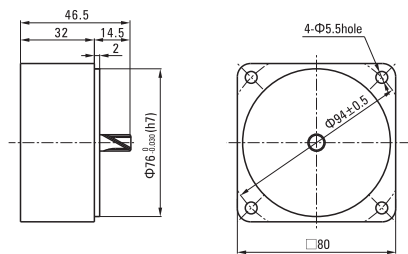


### ● 中间减速器 Decimal Gearhead

可安装在GN齿轮轴型上 Can be connected to GN pinion shaft type  
电动机外形与齿轮轴型相同

4GN10XK

重量 Weight：0.41kg



## 弧锥直角 SPIRAL BEVEL RIGHT ANGLE



### ■ 装有减速器时的容许转矩 Gear Motor-Torque Table

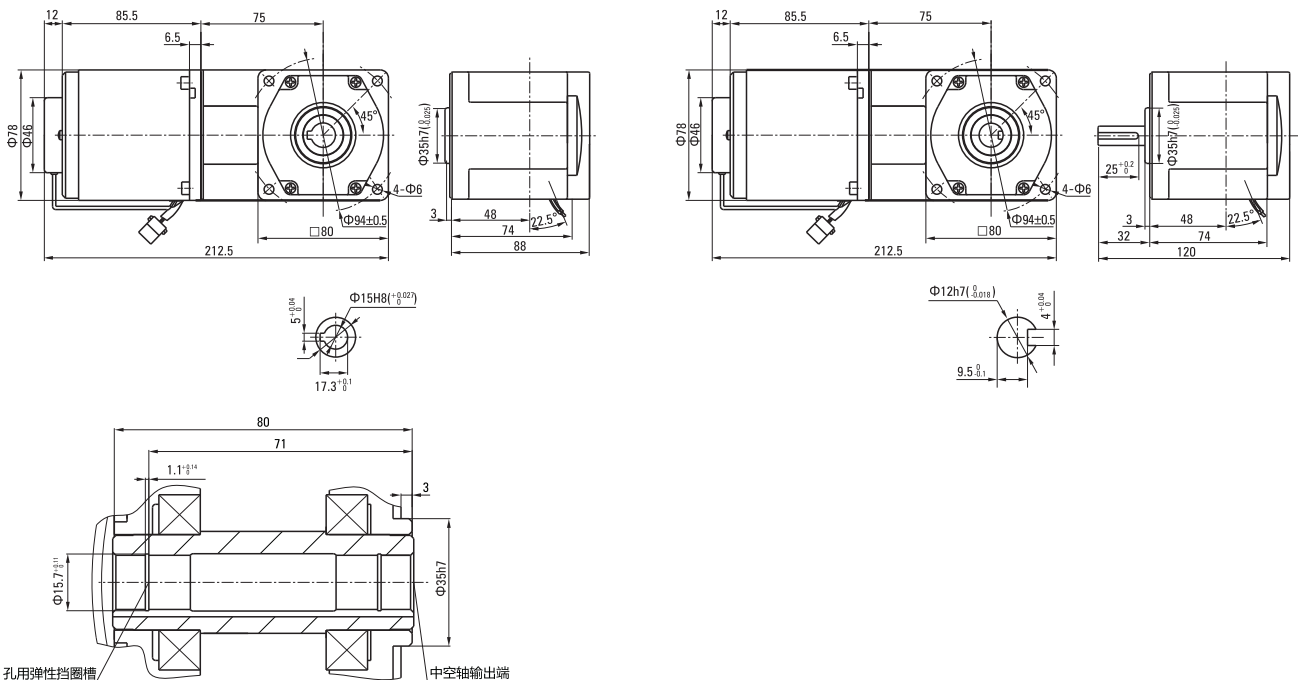
- 减速器-中间减速器另售。• 电动机型号的□中为表示带端子箱型的记号(T)。  
Gearhead and mid-gearbox can be sold separately. Enter the code that represents the terminal box type (T) in the box (□) within the model name.
- 减速器型号的□中为减速比的数值。□色表示与电动机同一方向运转，其他则为相反方向。  
Enter the gear ratio in the box (□) within the model name.  
The colored background □ indicates the same rotating direction of the motor while the rotating direction of others are opposite.
- 转速是以电动机的同步转速 (50Hz:1500r/min、60Hz:1800r/min) 为基准除以减速比而算出来的数值。实际转速将随负载大小变化而比所示数值减少2%~20%左右。  
The speed is calculated by dividing the motor's synchronous speed (50Hz:1500r/min、60Hz:1800r/min) by the gear ratio. The actual speed is 2%~20% less than the displayed value, depending on the size of the load.
- 希望以大于下表的减速比进行进一步减速时，可在电动机与减速器之间安装减速比为10的中间减速器。这时的容许转矩为8N·m。  
To reduce the speed beyond the gear ratio in the table, attach a mid-gearbox (gear ratio:10) between the gearhead and motor. In that case, the permissible torque is 8N·m.

### ■ 容许力矩单位 Allowance Torque Unit: 上段 Upside (N.m) / 下段 Belowside (kgf.cm)

机型Type 电动机/减速器 Motor/Gearhead	减速比Gear Ratio	容许力矩 Allowance Torque																				
		3	3.6	5	6	7.5	9	12.5	15	18	25	30	3.6	50	60	75	90	100	120	150	180	
4K25RGN-A□ 4K25RGN-E□ 4K25RGN-C□ 4K25RGN-H□	4GN□RC 4GN□RT	50Hz	0.36	0.43	0.59	0.71	0.99	1.18	1.64	1.97	2.37	3.29	3.95	4.73	6.58	7.10	8.00	8.00	8.00	8.00	8.00	8.00
		60Hz	6.00	5.00	3.60	3.00	2.40	2.00	1.44	1.20	1.00	7.2	6.0	5.00	3.6	3.0	2.4	2.0	1.8	1.5	1.2	1.0
4K25RGN-A□ 4K25RGN-E□ 4K25RGN-C□ 4K25RGN-H□	4GN□RC 4GN□RT	50Hz	3.62	4.35	6.04	7.25	10.1	12.1	16.8	20.1	24.2	33.5	40.3	48.3	67.1	72.5	80.0	80.0	80.0	80.0	80.0	80.0
		60Hz	0.29	0.34	0.48	0.57	0.80	0.95	1.33	1.59	1.91	2.65	3.18	3.82	5.30	5.73	7.16	8.00	8.00	8.00	8.00	8.00
4K25RGN-A□ 4K25RGN-E□ 4K25RGN-C□ 4K25RGN-H□	4GN□RC 4GN□RT	50Hz	2.92	3.51	4.87	5.84	8.12	9.74	13.5	16.2	19.5	27.1	32.5	39.0	54.1	58.4	73.0	80.0	80.0	80.0	80.0	80.0
		60Hz	2.92	3.51	4.87	5.84	8.12	9.74	13.5	16.2	19.5	27.1	32.5	39.0	54.1	58.4	73.0	80.0	80.0	80.0	80.0	80.0

### ■ 调速尺寸图 Speed Control Type Drawing

4K25RGN-A□/4GN□RC 4K25RGN-E□/4GN□RC	4K25RGN-C□/4GN□RC 4K25RGN-H□/4GN□RC	4K25RGN-A□/4GN□RT 4K25RGN-E□/4GN□RT	4K25RGN-C□/4GN□RT 4K25RGN-H□/4GN□RT
--	--	--	--



注：接插件配标准型调速器 Note: The connector is for zhongda standard speed controller

# 调速电动机

## SPEED ADJUSTABLE MOTOR

■ 40W □ 90mm



### 规格 Specs 连续额定 Cont. Rated

型号Model · 类型 Type 导线型 Lead Wire Type		最大 输出功率 Output power W	电压 Voltage V	频率 Frequency Hz	调速范围 Speed Control Range r/min	容许转矩 Allowance Torque		启动转矩 Starting Torque mN.m	电流 Current A	电容器容量 Capacitor μF
齿轮轴型 Pinion Shaft	圆轴型 Round Shaft					1200r/min mN.m	90r/min mN.m			
5IK40RGN-A	5IK40RA-A	40	1ph 100	50	90~1350	260	70	180	0.65	12.0
				60	90~1650				0.70	
5IK40RGN-E	5IK40RA-E	40	1ph 110	60	90~1650	260	65	180	0.55	8.0
			1ph 120						0.60	
5IK40RGN-C	5IK40RA-C	40	1ph 220	50	90~1350	300	75	160	0.35	2.5
			1ph 230						0.40	
5IK40RGN-H	5IK40RA-H	40	1ph 220	60	90~1650	230	70	145	0.35	2.5
			1ph 230						0.40	

- 各种安全规格以电动机铭牌上的型号取得认证。  
When the motor is approved under various safety standards, the model name on the nameplate is the approved model name.
- 注：“-A”型号中电压为110V时，配置电容器容量以实际铭牌为准。  
Note：“-A” it means the voltage 110v,the assembly capacitor vaule it is according the labe.

### 种类 Type

- 电动机 Motor

机型 Type	型号Model	
	齿轮轴型 Pinion Shaft	圆轴型 Round Shaft
导线型 Lead Wire Type	5IK40RGN-A	5IK40RA-A
	5IK40RGN-E	5IK40RA-E
	5IK40RGN-C	5IK40RA-C
	5IK40RGN-H	5IK40RA-H

- 平行轴减速器（另售） Parallel Shaft Gearhead (Sold Separately)

减速器种类 Gearhead Type	减速器型号 Gearhead Model	减速比 Gear Ratio
长寿命●低噪音 Long Life ● Low Noise	5GN□K	3、3.6、5、6、7.5、9、 12.5、15、18、25、30、 36、50、60、75、90、 100、120、150、180、200
	5GN10XK (中间减速器 Decimal Gearhead)	

- 减速器型号的□中为减速比的数值  
Enter the gear ratio in the box ( □ ) within the model name

## ■ 装有减速器时的容许转矩 Gear Motor-Torque Table

- 减速器另售-中间减速器另售。电动机型号的□中为表示带端子箱型的记号(T)。  
Gearhead and mid-gearbox can be sold separately. Enter the code that represents the terminal box type (T) in the box (□) within the model name.
- 减速品型号的□中为减速比的数值。  
Enter the gear ratio in the box(□) within the model name.
- □色表示与电动机同一方向运转，其他则为相反方向。  
The colored background □ indicates the same rotating direction of the motor while the rotating direction of others are opposite.
- 转速是以电动机的同步转速（50Hz：1500r/min、60Hz：1800r/min）为基准除以减速比而算出来的数值。实际转速将随负载大小变化所示数值减少2%~20%左右。  
The speed is calculated by dividing the motor's synchronous speed (50Hz：1500r/min、60Hz：1800r/min) by the gear ratio. The actual speed is 2%~20% less than the displayed value, depending on the size of the load.
- 希望以大于下表的减速比进行进一步减速时，可在电动机与减速机之间安装减速比为10的中间减速机。这时的容许转矩为10N·m。  
To reduce the speed beyond the gear ratio in the table, attach a decimal gearhead(gear ratio:10)between the gearhead and motor. In that case, the permissible torque is 10N·m.

## ■ 容许力矩单位 Allowance Torque Unit：上段 Upside ( N.m ) /下段 Belowside ( kgf.cm )

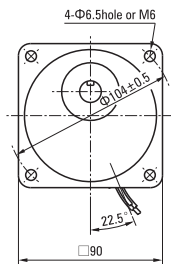
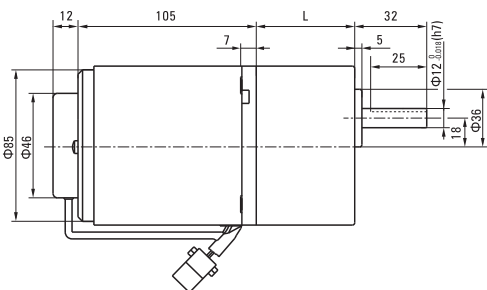
类型 Type 电动机/减速机 Motor/Gearhead	减速比 Gear Ratio	容许力矩																					
		3	3.6	5	6	7.5	9	12.5	15	18	25	30	36	50	60	75	90	100	120	150	180	200	
5IK40RGN-A 5IK40RGN-E 5IK40RGN-C 5IK40RGN-H	5GN□K	50Hz	500	417	300	250	200	166	120	100	83	60	50	41	30	25	20	16	15	12.5	10	8.3	7.5
		60Hz	600	500	360	300	240	200	144	120	100	72	60	50	36	30	24	20	18	15	12	10	9
	5GN□K	50Hz	0.77	0.92	1.3	1.5	1.9	2.3	3.2	3.8	4.6	5.7	6.9	8.3	10	10	10	10	10	10	10	10	10
		60Hz	0.63	0.76	1.1	1.3	1.6	1.9	2.6	3.2	3.8	4.7	5.7	6.8	8.6	10	10	10	10	10	10	10	10

## ■ 外形图 ( 单位 mm ) Dimensions(Unit mm)

减速器附有安装用螺丝 Mounting screws are included with gearhead.

### ● 导线型 Lead Wiring Type

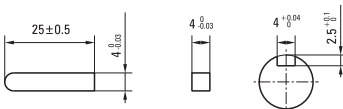
重量 Weight：电动机 Motor：2.5kg 减速器 Gearhead：1.35kg



电动机型号 Motor Model	减速器型号 Gearhead Model	减速比 Gear Ratio	L1
5IK40RGN-A 5IK40RGN-E 5IK40RGN-C 5IK40RGN-H	5GN□K	3~18	42
		25~200	60

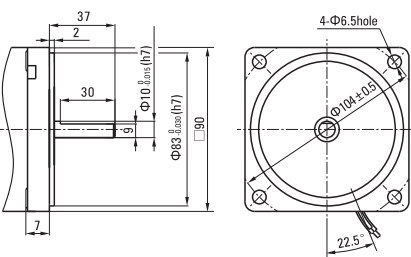
● 减速器型号的□中为减速比的数值  
Enter the gear ratio in the box (□) within the model name

### ● 键·键槽 ( 减速器附件 ) Key · Keyway(Accessory Of Gearhead)



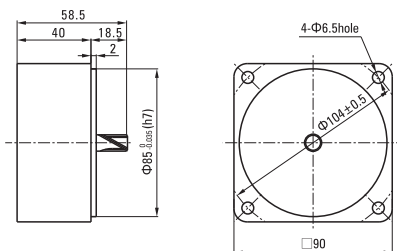
### ● 圆轴型的转轴部分 Shaft Section Of Round Shaft Type

除重量及轴部外电动机外形与齿轮轴型相同。  
Excluding weight and the shaft section motor shape are the same as those of the pinion shaft type.



### ● 中间减速器 Decimal Gearhead

可安装在GN齿轮轴型上 Can be connected to GN pinion shaft type  
电动机外形与齿轮轴型相同  
5GN10XK  
重量 Weight：0.6kg



## 弧锥直角 SPIRAL BEVEL RIGHT ANGLE



### 装有减速器时的容许转矩 Gear Motor-Torque Table

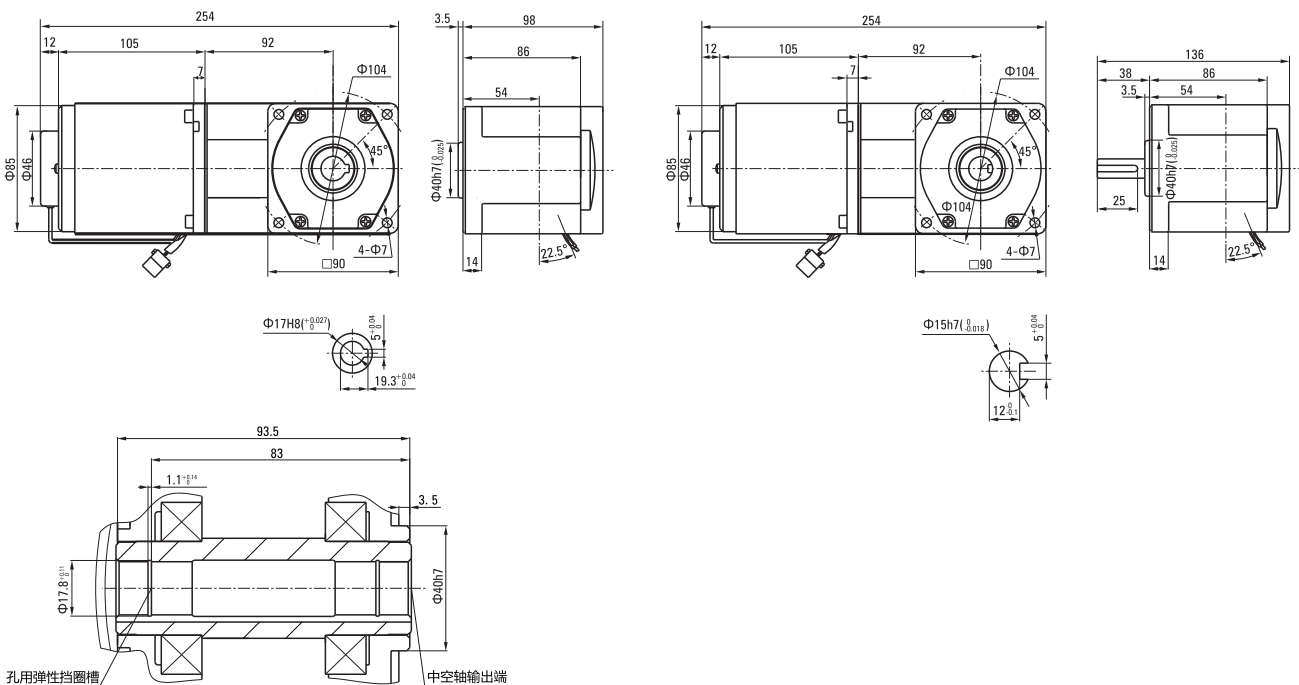
- 减速器-中间减速器另售。 • 电动机型号的□中为表示带端子箱型的记号(T)。  
Gearhead and mid-gearbox can be sold separately. Enter the code that represents the terminal box type (T) in the box (□) within the model name.
- 减速器型号的□中为减速比的数值。 □ 色表示与电动机同一方向运转，其他则为相反方向。  
Enter the gear ratio in the box (□) within the model name.  
The colored background □ indicates the same rotating direction of the motor while the rotating direction of others are opposite.
- 转速是以电动机的同步转速 (50Hz:1500r/min、60Hz:1800r/min) 为基准除以减速比而算出来的数值。实际转速将随负载大小变化而比所示数值减少2%~20%左右。  
The speed is calculated by dividing the motor's synchronous speed (50Hz:1500r/min、60Hz:1800r/min) by the gear ratio. The actual speed is 2%~20% less than the displayed value, depending on the size of the load.
- 希望以大于下表的减速比进行进一步减速时，可在电动机与减速器之间安装减速比为10的中间减速器。这时的容许转矩为20N·m。  
To reduce the speed beyond the gear ratio in the table, attach a mid-gearbox (gear ratio:10) between the gearhead and motor. In that case, the permissible torque is 20N·m.

### 容许力矩单位 Allowance Torque Unit: 上段 Upside (N.m) / 下段 Belowside (kgf.cm)

机型Type	减速比Gear Ratio	3	3.6	5	6	7.5	9	12.5	15	18	25	30	3.6	50	60	75	90	100	120	150	180		
电动机/减速器 Motor/Gearhead	转速Speed r/min	50Hz	500	417	300	250	200	166	120	100	83	60	50	417	30	25	20	16	15	12	10	8	
		60Hz	600	500	360	300	240	200	144	120	100	72	60	500	36	30	24	20	18	15	12	10	
5IK40RGU-A□ 5IK40RGU-E□ 5IK40RGU-C□ 5IK40RGU-H□ 5IK40RGU-S□	5GU□RC 5GU□RT	容许力矩 Allowance Torque	50Hz	0.57	0.68	0.59	1.14	1.58	1.89	2.63	3.16	3.79	5.26	6.31	6.8	9.5	11.4	14.2	17.0	18.9	20.0	20.0	20.0
			60Hz	5.80	6.96	9.66	11.6	16.1	19.3	26.8	32.2	38.6	53.7	64.4	70	97	116	145	174	193	200	200	200
			50Hz	0.46	0.55	0.76	0.92	1.27	1.53	2.12	2.55	3.05	4.24	5.09	5.50	7.64	9.16	11.5	13.7	15.3	18.3	20.0	20.0
			60Hz	4.67	5.61	7.79	9.35	13.0	15.6	21.6	26.0	31.2	43.3	51.9	56.1	77.9	93.5	117	140	156	187	200	200

### 调速尺寸图 Speed Control Type Drawing

5IK40RGU-A□/5GU□RC 5IK40RGU-E□/5GU□RC	5IK40RGU-C□/5GU□RC 5IK40RGU-H□/5GU□RC	5IK40RGU-A□/5GU□RT 5IK40RGU-E□/5GU□RT	5IK40RGU-C□/5GU□RT 5IK40RGU-H□/5GU□RT
--	--	--	--



注：接插件配标准型调速器 Note: The connector is for zhongda standard speed controller

## 调速电动机 SPEED ADJUSTABLE MOTOR

■ 60W    □ 90mm



### 规格 Specs 连续额定 Cont. Rated

型号Model · 类型 Type 导线型 Lead Wire Type		最大 输出功率 Output power W	电压 Voltage V	频率 Frequency Hz	调速范围 Speed Control Range r/min	容许转矩 Allowance Torque		启动转矩 Starting Torque mN.m	电流 Current A	电容器容量 Capacitor μF
齿轮轴型 Pinion Shaft	圆轴型 Round Shaft					1200r/min mN.m	90r/min mN.m			
5IK60RGN-AF	5IK60RA-AF	60	1ph 100	50	90~1350	460	140	265	1.00	20.0
				60	90~1650	490	160		1.10	
5IK60RGN-EF	5IK60RA-EF	60	1ph 110	60	90~1650	490	160	265	0.80	12.0
			1ph 120						0.85	
5IK60RGN-CF	5IK60RA-CF	60	1ph 220	50	90~1350	490	140	265	0.50	4.0
			1ph 230						0.55	
5IK60RGN-HF	5IK60RA-HF	60	1ph 220	60	90~1650	490	160	265	0.50	4.0
			1ph 230						0.55	

- 各种安全规格以电动机铭牌上的型号取得认证。  
When the motor is approved under various safety standards, the model name on the nameplate is the approved model name.
- 注：“-A”型号中电压为110V时，配置电容器容量以实际铭牌为准。  
Note:“-A” it means the voltage 110v,the assembly capacitor vaule it is according the labe.

### 种类 Type

#### ● 电动机 Motor

机型 Type	型号Model	
	齿轮轴型 Pinion Shaft	圆轴型 Round Shaft
导线型 Lead Wire Type	5IK60RGN-AF	5IK60RA-AF
	5IK60RGN-EF	5IK60RA-EF
	5IK60RGN-CF	5IK60RA-CF
	5IK60RGN-HF	5IK60RA-HF

#### ● 平行轴减速器 (另售) Parallel Shaft Gearhead (Sold Separately)

减速器种类 Gearhead Type	减速器型号 Gearhead Model	减速比 Gear Ratio
长寿命●低噪音 Long Life ● Low Noise	5GN□K	3、3.6、5、6、7.5、9、 12.5、15、18、25、30、 36、50、60、75、90、 100、120、150、180、200
	5GN10XK (中间减速器 Decimal Gearhead)	

- 减速器型号的□中为减速比的数值  
Enter the gear ratio in the box ( □ ) within the model name

## ■ 装有减速器时的容许转矩 Gear Motor-Torque Table

- 减速器另售-中间减速器另售。  
Gearhead and mid-gearbox can be sold separately.
- 减速品型号的□中为减速比的数值。  
Enter the gear ratio in the box(□) within the model name.
- □色表示与电动机同一方向运转，其他则为相反方向。  
The colored background □ indicates the same rotating direction of the motor while the rotating direction of others are opposite.
- 转速是以电动机的同步转速（50Hz：1500r/min、60Hz：1800r/min）为基准除以减速比而算出来的数值。实际转速将随负载大小变化所示数值减少2%~20%左右。  
The speed is calculated by dividing the motor's synchronous speed (50Hz：1500r/min、60Hz：1800r/min) by the gear ratio. The actual speed is 2%~20% less than the displayed value, depending on the size of the load.
- 希望以大于下表的减速比进行进一步减速时，可在电动机与减速机之间安装减速比为10的中间减速机。这时的容许转矩为10N·m。  
To reduce the speed beyond the gear ratio in the table, attach a decimal gearhead(gear ratio:10)between the gearhead and motor. In that case, the permissible torque is 10N·m.

## ■ 容许力矩单位 Allowance Torque Unit：上段 Upside ( N.m ) /下段 Belowside ( kgf.cm )

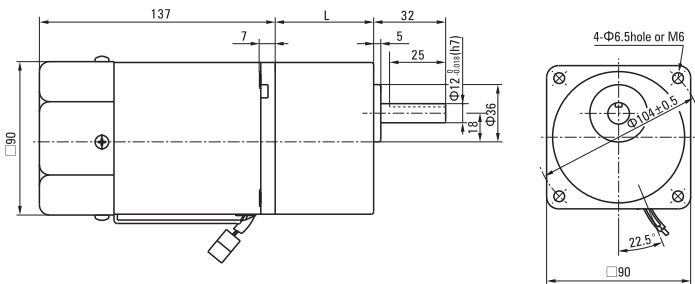
类型 Type 电动机/减速机 Motor/Gearhead	减速比 Gear Ratio		3	3.6	5	6	7.5	9	12.5	15	18	25	30	36	50	60	75	90	100	120	150	180	200
	转速 Speed r/min	50Hz	60Hz	500	417	300	250	200	166	120	100	83	60	50	41	30	25	20	16	15	12.5	10	8.3
5IK60RGN-A 5IK60RGN-E 5IK60RGN-C 5IK60RGN-H	5GN□K	50Hz	500	417	300	250	200	166	120	100	83	60	50	41	30	25	20	16	15	12.5	10	8.3	7.5
			600	500	360	300	240	200	144	120	100	72	60	50	36	30	24	20	18	15	12	10	9
		60Hz	500	417	300	250	200	166	120	100	83	60	50	41	30	25	20	16	15	12.5	10	8.3	7.5
			600	500	360	300	240	200	144	120	100	72	60	50	36	30	24	20	18	15	12	10	9

## ■ 外形图 ( 单位 mm ) Dimensions(Unit mm)

减速器附有安装用螺丝 Mounting screws are included with gearhead.

### ● 导线型 Lead Wiring Type

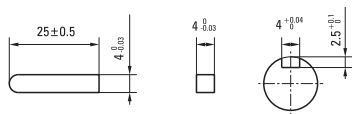
重量 Weight：电动机 Motor：2.8kg      减速器 Gearhead：1.35kg



电动机型号 Motor Model	减速器型号 Gearhead Model	减速比 Gear Ratio	L1
5IK60RGN-A 5IK60RGN-E 5IK60RGN-C 5IK60RGN-H	5GN□K	3~18	42
		25~200	60

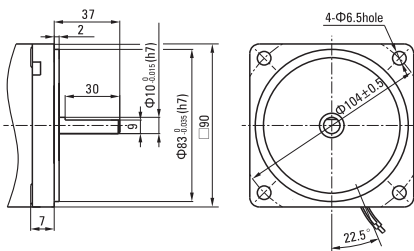
- 减速器型号的□中为减速比的数值  
Enter the gear ratio in the box ( □ ) within the model name

### ● 键·键槽 ( 减速器附件 ) Key · Keyway(Accessory Of Gearhead)



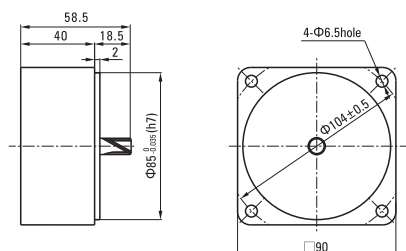
### ● 圆轴型的转轴部分 Shaft Section Of Round Shaft Type

除重量及轴部外电动机外形与齿轮轴型相同。  
Excluding weight and the shaft section motor shape are the same as those of the pinion shaft type.



### ● 中间减速器 Decimal Gearhead

可安装在GN齿轮轴型上 Can be connected to GN pinion shaft type  
电动机外形与齿轮轴型相同  
5GN10XK  
重量 Weight：0.6kg



## 调速电动机 SPEED ADJUSTABLE MOTOR

■ 60W    □ 90mm



### 规格 Specs 连续额定 Cont. Rated

型号Model · 类型 Type 导线型 Lead Wire Type	最大输出功率 Output power W	电压 Voltage V	频率 Frequency Hz	调速范围 Speed Control Range r/min	容许转矩 Allowance Torque		启动转矩 Starting Torque mN.m	电流 Current A	电容器容量 Capacitor μF
					1200r/min mN.m	90r/min mN.m			
5IK60RGU-AF	60	1ph 100	50	90~1350	460	140	265	1.00	20.0
			60	90~1650	490	160		1.10	
5IK60RGU-EF	60	1ph 110	60	90~1650	490	160	265	0.80	12.0
		1ph 120						0.85	
5IK60RGU-CF	60	1ph 220	50	90~1350	490	140	265	0.50	4.0
		1ph 230						0.55	
5IK60RGU-HF	60	1ph 220	60	90~1650	490	160	265	0.50	4.0
		1ph 230						0.55	

●各种安全规格以电动机铭牌上的型号取得认证。

When the motor is approved under various safety standards, the model name on the nameplate is the approved model name.

●注：“-A”型号中电压为110V时，配置电容器容量以实际铭牌为准。

Note：“-A” it means the voltage 110v, the assembly capacitor vaule it is according the labe.

### 种类 Type

● 电动机 Motor

机型 Type	型号Model
	齿轮轴型 Pinion Shaft
导线型 Lead Wire Type	5IK60RGU-AF
	5IK60RGU-EF
	5IK60RGU-CF
	5IK60RGU-HF

● 平行轴减速器（另售） Parallel Shaft Gearhead (Sold Separately)

减速器种类 Gearhead Type	减速器型号 Gearhead Model	减速比 Gear Ratio
长寿命●低噪音 Long Life ● Low Noise	5GU□KB	3、3.6、5、6、7.5、9、 12.5、15、18、25、30、 36、50、60、75、90、 100、120、150、180、200
	5GU10XK (中间减速器 Decimal Gearhead)	

●减速器型号的□中为减速比的数值

Enter the gear ratio in the box ( □ ) within the model name



## 装有减速器时的容许转矩 Gear Motor-Torque Table

- 减速器另售-中间减速器另售。电动机型号的□中为表示带端子箱型的记号(T)。  
Gearhead and mid-gearbox can be sold separately. Enter the code that represents the terminal box type (T) in the box (□) within the model name.
- 减速品型号的□中为减速比的数值。  
Enter the gear ratio in the box(□) within the model name.
- □色表示与电动机同一方向运转，其他则为相反方向。  
The colored background □ indicates the same rotating direction of the motor while the rotating direction of others are opposite.
- 转速是以电动机的同步转速（50Hz：1500r/min、60Hz：1800r/min）为基准除以减速比而算出来的数值。实际转速将随负载大小变化所示数值减少2%~20%左右。  
The speed is calculated by dividing the motor's synchronous speed (50Hz：1500r/min、60Hz：1800r/min) by the gear ratio. The actual speed is 2%~20% less than the displayed value, depending on the size of the load.
- 希望以大于下表的减速比进行进一步减速时，可在电动机与减速机之间安装减速比为10的中间减速机。这时的容许转矩为20N·m。  
To reduce the speed beyond the gear ratio in the table, attach a decimal gearhead(gear ratio:10)between the gearhead and motor. In that case, the permissible torque is 20N·m.

## 容许力矩单位 Allowance Torque Unit：上段 Upside ( N.m ) /下段 Belowside ( kgf.cm )

类型 Type 电动机/减速机 Motor/Gearhead	减速比 Gear Ratio		3	3.6	5	6	7.5	9	12.5	15	18	25	30	36	50	60	75	90	100	120	150	180	200
	转速 Speed r/min	50Hz	500	417	300	250	200	166	120	100	83	60	50	41	30	25	20	16	15	12.5	10	8.3	7.5
		60Hz	600	500	360	300	240	200	144	120	100	72	60	50	36	30	24	20	18	15	12	10	9
5IK60RGU-AF 5IK60RGU-EF 5IK60RGU-CF 5IK60RGU-HF	5GU□KB	50Hz	1.1	1.4	1.9	2.3	2.9	3.4	4.8	5.7	6.8	8.6	10	10.3	12.4	15.5	18.6	20	20	20	20	20	20
		60Hz	0.92	1.1	1.5	1.8	2.3	2.8	3.8	4.6	5.5	6.9	8.3	83	10	12.5	15	18.8	20	20	20	20	20
	5GU□K	50Hz	11.2	14.2	19.3	23.4	29.6	34.7	48.9	58.1	69.3	87.7	100	105	126	158	189	200	200	200	200	200	200
		60Hz	9.38	11.2	15.3	18.3	23.4	28.5	38.7	46.9	56.1	70.1	84.7	84.6	102	127	153	192	200	200	200	200	200

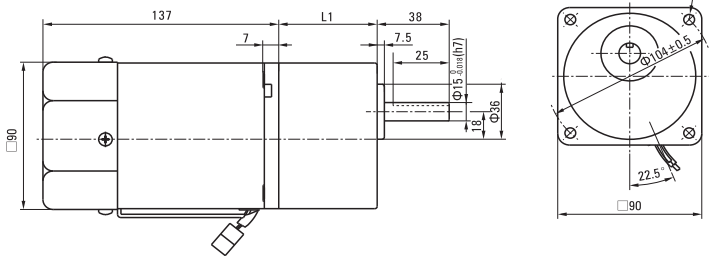
## 外形图 (单位 mm) Dimensions(Unit mm)

减速器附有安装用螺丝 Mounting screws are included with gearhead.

### ● 导线型 Lead Wiring Type

重量 Weight：电动机 Motor：2.8kg

减速器 Gearhead：1.5kg



电动机型号 Motor Model	减速器型号 Gearhead Model	减速比 Gear Ratio	L1
5IK60RGU-AF 5IK60RGU-EF 5IK60RGU-CF 5IK60RGU-HF	5GU□KB	3~200	65.5

● 减速器型号的□中为减速比的数值  
Enter the gear ratio in the box (□) within the model name

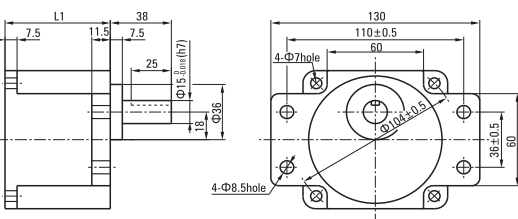
### ● 凸缘安装型减速器 Flange Mounting Reducer

可安装在GU齿轮轴型上

Can be mounted on GU type gear shaft

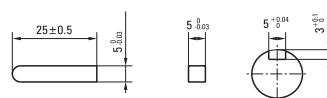
5GU□K

重量 Weight: 1.5kg



### ● 键·键槽 (减速器附件)

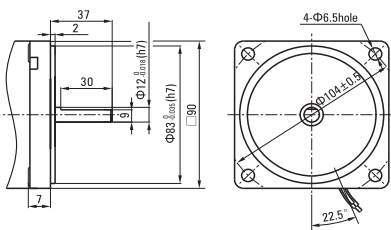
Key · Keyway (Accessory of Gearhead)



### ● 圆轴型的转轴部分 Shaft Section Of Round Shaft Type

除重量及轴部外电动机外形与齿轮轴型相同。

Excluding weight and the shaft section motor shape are the same as those of the pinion shaft type.



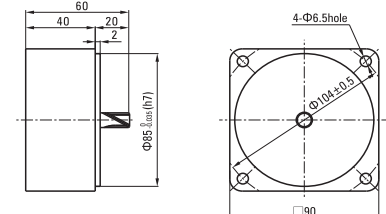
### ● 中间减速器 Decimal Gearhead

可安装在GU齿轮轴型上 Can be connected to GU pinion shaft type

电动机外形与齿轮轴型相同

5GU10XK

重量 Weight：0.65kg



## 弧锥直角 SPIRAL BEVEL RIGHT ANGLE



### ■ 装有减速器时的容许转矩 Gear Motor-Torque Table

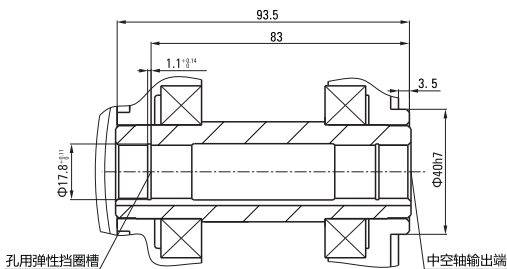
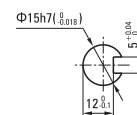
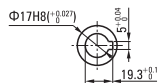
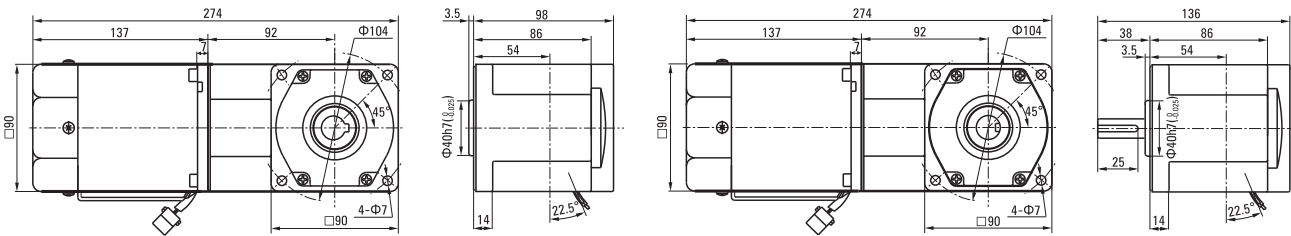
- 减速器-中间减速器另售。 • 电动机型号的□中为表示带端子箱型的记号(T)。  
Gearhead and mid-gearbox can be sold separately. Enter the code that represents the terminal box type (T) in the box (□) within the model name.
- 减速器型号的□中为减速比的数值。 □ 色表示与电动机同一方向运转，其他则为相反方向。  
Enter the gear ratio in the box (□) within the model name.  
The colored background □ indicates the same rotating direction of the motor while the rotating direction of others are opposite.
- 转速是以电动机的同步转速 (50Hz:1500r/min、60Hz:1800r/min) 为基准除以减速比而算出来的数值。实际转速将随负载大小变化而比所示数值减少2%~20%左右。  
The speed is calculated by dividing the motor's synchronous speed (50Hz:1500r/min、60Hz:1800r/min) by the gear ratio. The actual speed is 2%~20% less than the displayed value, depending on the size of the load.
- 希望以大于下表的减速比进行进一步减速时，可在电动机与减速器之间安装减速比为10的中间减速器。这时的容许转矩为20N·m。  
To reduce the speed beyond the gear ratio in the table, attach a mid-gearbox (gear ratio:10) between the gearhead and motor. In that case, the permissible torque is 20N·m.

### ■ 容许力矩单位 Allowance Torque Unit: 上段 Upside (N.m) / 下段 Belowside (kgf.cm)

机型Type	电动机/减速器 Motor/Gearhead	减速比Gear Ratio	3	3.6	5	6	7.5	9	12.5	15	18	25	30	3.6	50	60	75	90	100	120	150	180	
		转速Speed r/min																					
		50Hz	500	417	300	250	200	166	120	100	83	60	50	417	30	25	20	16	15	12	10	8	
		60Hz	600	500	360	300	240	200	144	120	100	72	60	500	36	30	24	20	18	15	12	10	
	5GU□RC 5GU□RT	容许力矩 Allowance Torque	50Hz	0.85	1.02	1.42	1.70	2.37	2.84	3.95	4.73	5.68	7.89	9.47	10.2	14.2	17.0	20.0	20.0	20.0	20.0	20.0	20.0
8.70				10.4	14.5	17.4	24.2	29.0	40.3	48.3	58.0	80.5	96.6	104	145	174	200	200	200	200	200	200	200
60Hz			0.69	0.82	1.15	1.37	1.91	2.29	3.18	3.82	4.58	6.36	7.64	8.25	11.5	13.7	17.2	20.0	20.0	20.0	20.0	20.0	20.0
			6.73	8.08	11.2	13.5	19.48	23.37	32.46	38.96	46.75	64.93	77.92	84.1	117	140	175	200	200	200	200	200	200

### ■ 调速尺寸图 Speed Control Type Drawing

5IK60RGU-AF□/5GU□RC 5IK60RGU-EF□/5GU□RC	5IK60RGU-CF□/5GU□RC 5IK60RGU-HF□/5GU□RC	5IK60RGU-AF□/5GU□RT 5IK60RGU-EF□/5GU□RT	5IK60RGU-CF□/5GU□RT 5IK60RGU-HF□/5GU□RT
--	--	--	--



注：接插件配标准型调速器 Note: The connector is for standard speed controller

# 调速电动机 SPEED ADJUSTABLE MOTOR

■ 90W □ 90mm



## 规格 Specs 连续额定 Cont. Rated

型号Model · 类型 Type 导线型 Lead Wire Type		最大 输出功率 Output power W	电压 Voltage V	频率 Frequency Hz	调速范围 Speed Control Range r/min	容许转矩 Allowance Torque		启动转矩 Starting Torque mN.m	电流 Current A	电容器容量 Capacitor μF
齿轮轴型 Pinion Shaft	圆轴型 Round Shaft					1200r/min mN.m	90r/min mN.m			
5IK90RGU-AF	5IK90RA-AF	90	1ph 100	50	90~1350	710	230	405	1.55	25.0
				60	90~1650		260		1.85	
5IK90RGU-EF	5IK90RA-EF	90	1ph 110	60	90~1650	710	260	410	1.40	20.0
			1ph 120						1.45	
5IK90RGU-CF	5IK90RA-CF	90	1ph 220	50	90~1350	710	230	410	0.72	5.0
			1ph 230						0.70	
5IK90RGU-HF	5IK90RA-HF	90	1ph 220	60	90~1650	710	260	410	0.71	5.0
			1ph 230						0.75	

- 各种安全规格以电动机铭牌上的型号取得认证。  
When the motor is approved under various safety standards, the model name on the nameplate is the approved model name.
- 注：“-A”型号中电压为110V时，配置电容器容量以实际铭牌为准。  
Note：“-A” it means the voltage 110v,the assembly capacitor vaule it is according the labe.

## 种类 Type

- 电动机 Motor

机型 Type	型号Model	
	齿轮轴型 Pinion Shaft	圆轴型 Round Shaft
导线型 Lead Wire Type	5IK90RGU-AF	5IK90RA-AF
	5IK90RGU-EF	5IK90RA-EF
	5IK90RGU-CF	5IK90RA-CF
	5IK90RGU-HF	5IK90RA-HF

- 平行轴减速器（另售）Parallel Shaft Gearhead (Sold Separately)

减速器种类 Gearhead Type	减速器型号 Gearhead Model	减速比 Gear Ratio
长寿命●低噪音 Long Life ● Low Noise	5GU□K	3、3.6、5、6、7.5、9、 12.5、15、18、25、30、 36、50、60、75、90、 100、120、150、180、200
	5GU10XK (中间减速器 Decimal Gearhead)	

- 减速器型号的□中为减速比的数值  
Enter the gear ratio in the box ( □ ) within the model name

## ■ 装有减速器时的容许转矩 Gear Motor-Torque Table

- 减速器另售·中间减速器另售。电动机型号的□中为表示带端子箱型的记号(T)。  
Gearhead and mid-gearbox can be sold separately. Enter the code that represents the terminal box type (T) in the box (□) within the model name.
- 减速品型号的□中为减速比的数值。  
Enter the gear ratio in the box(□) within the model name.
- □色表示与电动机同一方向运转，其他则为相反方向。  
The colored background □ indicates the same rotating direction of the motor while the rotating direction of others are opposite.
- 转速是以电动机的同步转速 (50Hz : 1500r/min、60Hz : 1800r/min) 为基准除以减速比而算出来的数值。实际转速将随负载大小变化所示数值减少2%~20%左右。  
The speed is calculated by dividing the motor's synchronous speed (50Hz : 1500r/min、60Hz : 1800r/min) by the gear ratio. The actual speed is 2%~20% less than the displayed value, depending on the size of the load.
- 希望以大于下表的减速比进行进一步减速时，可在电动机与减速机之间安装减速比为10的中间减速机。  
这时的容许转矩为20N·m。  
To reduce the speed beyond the gear ratio in the table, attach a decimal gearhead(gear ratio:10)between the gearhead and motor. In that case, the permissible torque is 20N·m.

## ■ 容许力矩单位 Allowance Torque Unit : 上段 Upside ( N·m ) /下段 Belowside ( kgf·cm )

类型 Type 电动机/减速机 Motor/Gearhead	减速比 Gear Ratio		3	3.6	5	6	7.5	9	12.5	15	18	25	30	36	50	60	75	90	100	120	150	180	200
	转速 Speed r/min	50Hz	500	417	300	250	200	166	120	100	83	60	50	41	30	25	20	16	15	12.5	10	8.3	7.5
5IK90RGU-AF□ 5IK90RGU-EF□ 5IK90RGU-CF□ 5IK90RGU-HF□	5GU□KB 5GU□K	50Hz	1.7	20	2.8	3.4	4.3	5.1	6.4	7.7	9.2	11.6	13.6	16.6	20	20	20	20	20	20	20	20	20
		60Hz	1.4	1.7	2.5	2.8	3.5	4.2	5.2	6.2	7.5	9.4	11.3	13.5	18.8	20	20	20	20	20	20	20	20
	50Hz	17.3	20.4	28.6	34.7	43.9	52.0	65.3	78.6	93.3	118	139	169	200	200	200	200	200	200	200	200	200	200
	60Hz	14.3	17.3	25.5	28.6	35.7	42.9	53.1	63.3	76.5	95.9	115	138	19.2	200	200	200	200	200	200	200	200	200

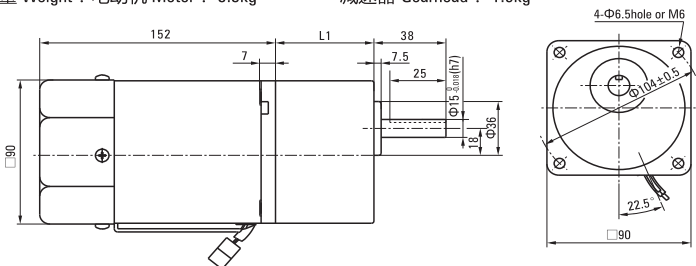
## ■ 外形图 (单位 mm) Dimensions(Unit mm)

减速器附有安装用螺丝Mounting screws are included with gearhead.

### ● 导线型 Lead Wiring Type

重量 Weight : 电动机 Motor : 3.3kg

减速器 Gearhead : 1.5kg



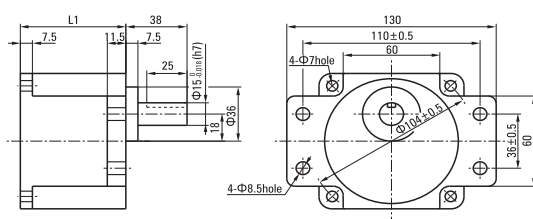
电动机型号 Motor Model	减速器型号 Gearhead Model	减速比 Gear Ratio	L1
5IK90RGU-AF 5IK90RGU-EF 5IK90RGU-CF 5IK90RGU-HF	5GU□KB	3~200	65.5

● 减速器型号的□中为减速比的数值  
Enter the gear ratio in the box (□) within the model name

### ● 凸缘安装型减速机 Flange Mounting Reducer

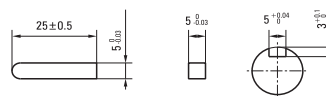
可安装在GU齿轮轴型上  
Can be mounted on GU type gear shaft  
5GU□K

重量Weight:1.5kg



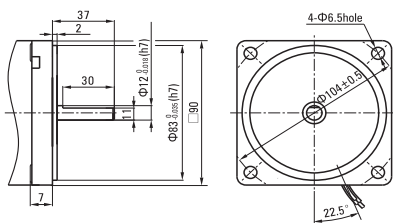
### ● 键·键槽 (减速机附件)

Key · Keyway(Accessory of Gearhead)



### ● 圆轴型的转轴部分 Shaft Section Of Round Shaft Type

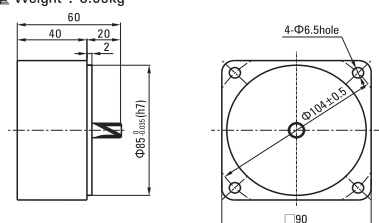
除重量及轴部外电动机外形与齿轮轴型相同。  
Excluding weight and the shaft section motor shape are the same as those of the pinion shaft type.



### ● 中间减速器 Decimal Gearhead

可安装在GU齿轮轴型上。Can be connected to GU pinion shaft type  
电动机外形与齿轮轴型相同  
5GU10XK

重量 Weight : 0.65kg



## 弧锥直角 SPIRAL BEVEL RIGHT ANGLE



### 装有减速器时的容许转矩 Gear Motor-Torque Table

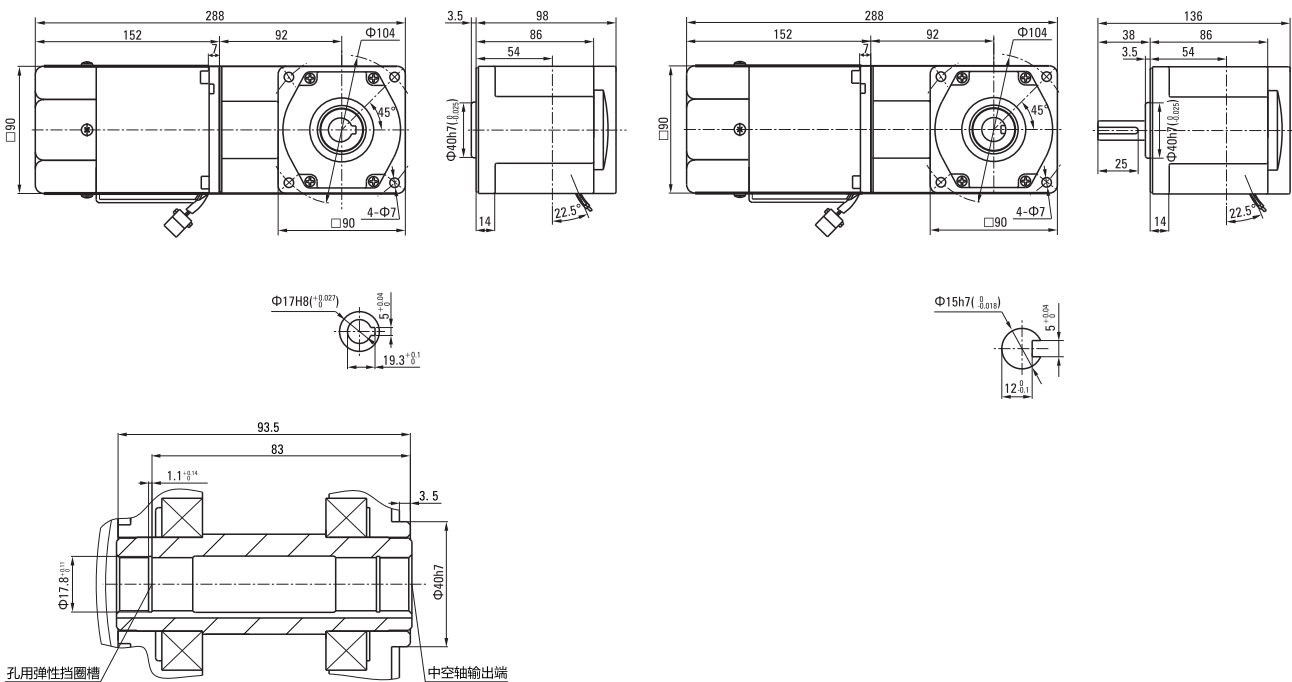
- 减速器·中间减速器另售。 • 电动机型号的□中为表示带端子箱型的记号(T)。  
Gearhead and mid-gearbox can be sold separately. Enter the code that represents the terminal box type (T) in the box (□) within the model name.
- 减速器型号的□中为减速比的数值。    色表示与电动机同一方向运转, 其他则为相反方向。  
Enter the gear ratio in the box (□) within the model name.  
The colored background    indicates the same rotating direction of the motor while the rotating direction of others are opposite.
- 转速是以电动机的同步转速 (50Hz:1500r/min、60Hz:1800r/min) 为基准除以减速比而算出来的数值。实际转速将随负载大小变化而比所示数值减少2%~20%左右。  
The speed is calculated by dividing the motor's synchronous speed (50Hz:1500r/min、60Hz:1800r/min) by the gear ratio. The actual speed is 2%~20% less than the displayed value, depending on the size of the load.
- 希望以大于下表的减速比进行进一步减速时, 可在电动机与减速器之间安装减速比为10的中间减速器。这时的容许转矩为20N·m。  
To reduce the speed beyond the gear ratio in the table, attach a mid-gearbox (gear ratio:10) between the gearhead and motor. In that case, the permissible torque is 20N·m.

### 容许力矩单位 Allowance Torque Unit: 上段 Upside (N.m) / 下段 Belowside (kgf.cm)

机型Type 电动机/减速器 Motor/Gearhead	减速比Gear Ratio	转速Speed r/min	容许力矩 Allowance Torque																		
			3	3.6	5	6	7.5	9	12.5	15	18	25	30	3.6	50	60	75	90	100	120	150
5IK90RGU-AF□ 5IK90RGU-EF□ 5GU□RC 5IK90RGU-CF□ 5GU□RT 5IK90RGU-HF□	50Hz	500	417	300	250	200	166	120	100	83	60	50	417	30	25	20	16	15	12	10	8
		600	500	360	300	240	200	144	120	100	72	60	500	36	30	24	20	18	15	12	10
5IK90RGU-AF□ 5IK90RGU-EF□ 5GU□RC 5IK90RGU-CF□ 5GU□RT 5IK90RGU-HF□	60Hz	1.28	1.53	2.13	2.56	3.55	4.26	5.92	7.10	8.52	11.8	14.2	15.3	20.0	20.0	20.0	20.0	20.0	20.0	20.0	20.0
		1.03	1.24	1.72	2.06	2.86	3.44	4.77	5.73	6.87	9.54	11.5	12.4	17.2	20.0	20.0	20.0	20.0	20.0	20.0	20.0
5IK90RGU-AF□ 5IK90RGU-EF□ 5GU□RC 5IK90RGU-CF□ 5GU□RT 5IK90RGU-HF□	50Hz	10.5	12.6	17.5	21.0	29.2	35.1	48.7	58.4	70.1	97.4	117	126	175	200	200	200	200	200	200	200
		10.5	12.6	17.5	21.0	29.2	35.1	48.7	58.4	70.1	97.4	117	126	175	200	200	200	200	200	200	200

### 调速尺寸图 Speed Control Type Drawing

5IK90RGU-AF□/5GU□RC 5IK90RGU-EF□/5GU□RC	5IK90RGU-CF□/5GU□RC 5IK90RGU-HF□/5GU□RC	5IK90RGU-AF□/5GU□RT 5IK90RGU-EF□/5GU□RT	5IK90RGU-CF□/5GU□RT 5IK90RGU-HF□/5GU□RT
--	--	--	--



注: 接插件配标准型调速器 Note: The connector is for standard speed controller

## 调速电动机 SPEED ADJUSTABLE MOTOR

■ 120W □ 90mm



### 规格 Specs 连续额定 Cont. Rated

型号Model · 类型 Type 导线型 Lead Wire Type		最大 输出功率 Output power W	电压 Voltage V	频率 Frequency Hz	调速范围 Speed Control Range r/min	容许转矩 Allowance Torque		启动转矩 Starting Torque mN.m	电流 Current A	电容器容量 Capacitor μF
齿轮轴型 Pinion Shaft	圆轴型 Round Shaft					1200r/min mN.m	90r/min mN.m			
5IK120RGU-AF	5IK120RA-AF	120	1ph 100	50	90~1350	750	330	530	2.10	30
				60	90~1650				2.50	
5IK120RGU-EF	5IK120RA-EF	120	1ph 110	60	90~1650	750	360	530	1.65	25
			1ph 120						1.80	
5IK120RGU-CF	5IK120RA-CF	120	1ph 220	50	90~1350	750	330	530	1.00	7.0
			1ph 230						0.95	
5IK120RGU-HF	5IK120RA-HF	120	1ph 220	60	90~1650	750	360	530	1.00	7.0
			1ph 230						0.95	

- 各种安全规格以电动机铭牌上的型号取得认证。  
When the motor is approved under various safety standards, the model name on the nameplate is the approved model name.
- 注：“-A”型号中电压为110V时，配置电容器容量以实际铭牌为准。  
Note:“-A” it means the voltage 110v,the assembly capacitor vaule it is according the labe.

### 种类 Type

#### ● 电动机 Motor

机型 Type	型号Model	
	齿轮轴型 Pinion Shaft	圆轴型 Round Shaft
导线型 Lead Wire Type	5IK120RGU-AF	5IK120RA-AF
	5IK120RGU-EF	5IK120RA-EF
	5IK120RGU-CF	5IK120RA-CF
	5IK120RGU-HF	5IK120RA-HF

#### ● 平行轴减速器（另售） Parallel Shaft Gearhead (Sold Separately)

减速器种类 Gearhead Type	减速器型号 Gearhead Model	减速比 Gear Ratio
长寿命●低噪音 Long Life ● Low Noise	5GU□KB	3、3.6、5、6、7.5、9、 12.5、15、18、25、30、 36、50、60、75、90、 100、120、150、180、200
	5GU10XK (中间减速器 Decimal Gearhead)	

- 减速器型号的□中为减速比的数值  
Enter the gear ratio in the box ( □ ) within the model name

## 装有减速器时的容许转矩 Gear Motor-Torque Table

- 减速器另售-中间减速器另售。电动机型号的□中为表示带端子箱型的记号(T)。  
Gearhead and mid-gearbox can be sold separately. Enter the code that represents the terminal box type (T) in the box (□) within the model name.
- 减速品型号的□中为减速比的数值。  
Enter the gear ratio in the box(□) within the model name.
- □色表示与电动机同一方向运转，其他则为相反方向。  
The colored background □ indicates the same rotating direction of the motor while the rotating direction of others are opposite.
- 转速是以电动机的同步转速（50Hz：1500r/min、60Hz：1800r/min）为基准除以减速比而算出来的数值。实际转速将随负载大小变化所示数值减少2%~20%左右。  
The speed is calculated by dividing the motor's synchronous speed (50Hz：1500r/min、60Hz：1800r/min) by the gear ratio. The actual speed is 2%~20% less than the displayed value, depending on the size of the load.
- 希望以大于下表的减速比进行进一步减速时，可在电动机与减速机之间安装减速比为10的中间减速机。这时的容许转矩为20N·m。  
To reduce the speed beyond the gear ratio in the table, attach a decimal gearhead(gear ratio:10)between the gearhead and motor. In that case, the permissible torque is 20N·m.

## 容许力矩单位 Allowance Torque Unit：上段 Upside ( N.m ) /下段 Belowside ( kgf.cm )

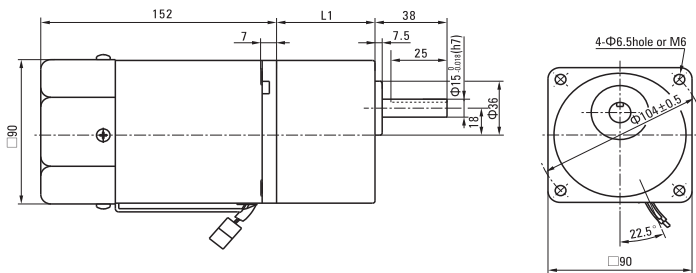
类型 Type 电动机/减速机 Motor/Gearhead	减速比 Gear Ratio		3	3.6	5	6	7.5	9	12.5	15	18	25	30	36	50	60	75	90	100	120	150	180	200		
	转速 Speed r/min	50Hz	500	417	300	250	200	166	120	100	83	60	50	41	30	25	20	16	15	12.5	10	8.3	7.5		
5IK120RGU-AF 5IK120RGU-EF 5IK120RGU-CF 5IK120RGU-HF	5GU□KB 5GU□K	50Hz	2.3	2.7	3.8	4.5	5.6	6.8	8.5	10.2	12.2	15.3	18.4	20	20	20	20	20	20	20	20	20	20	20	
			23.4	27.5	38.7	45.9	57.1	69.3	86.7	104	124	156	187	200	200	200	200	200	200	200	200	200	200	200	200
		60Hz	1.8	2.2	3.0	3.6	4.6	5.5	6.8	8.2	9.8	12.4	14.9	17.8	20	20	20	20	20	20	20	20	20	20	20
			18.3	22.4	30.6	36.7	46.9	56.1	69.5	83.6	100	126	152	181	200	200	200	200	200	200	200	200	200	200	200

## 外形图 (单位 mm) Dimensions(Unit mm)

减速器附有安装用螺丝 Mounting screws are included with gearhead.

### ● 导线型 Lead Wiring Type

重量 Weight：电动机 Motor：3.5kg 减速器 Gearhead：1.5kg

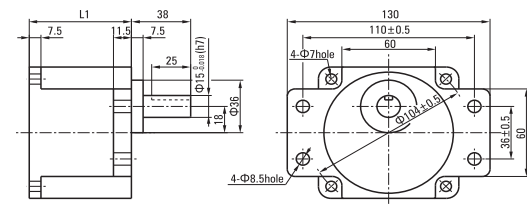


电动机型号 Motor Model	减速器型号 Gearhead Model	减速比 Gear Ratio	L1
5IK90RGU-AF 5IK90RGU-EF 5IK90RGU-CF 5IK90RGU-HF	5GU□KB	3~200	65.5

● 减速器型号的□中为减速比的数值  
Enter the gear ratio in the box (□) within the model name

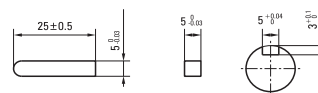
### ● 凸缘安装型减速器 Flange Mounting Reducer

可安装在GU齿轮轴型上  
Can be mounted on GU type gear shaft  
5GU□K  
重量 Weight: 1.5kg



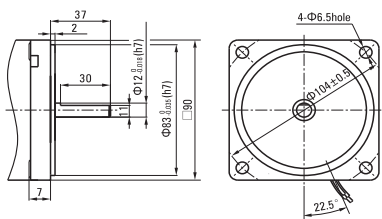
### ● 键·键槽 (减速器附件) Key · Keyway (Accessory of Gearhead)

Key · Keyway (Accessory of Gearhead)



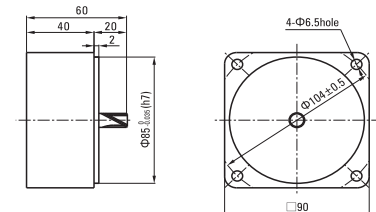
### ● 圆轴型的转轴部分 Shaft Section Of Round Shaft Type

除重量及轴部外电动机外形与齿轮轴型相同。  
Excluding weight and the shaft section motor shape are the same as those of the pinion shaft type.



### ● 中间减速器 Decimal Gearhead

可安装在GU齿轮轴型上 Can be connected to GU pinion shaft type  
电动机外形与齿轮轴型相同  
5GU10XK  
重量 Weight：0.65kg



# 弧锥直角 SPIRAL BEVEL RIGHT ANGLE



## ■ 装有减速器时的容许转矩 Gear Motor-Torque Table

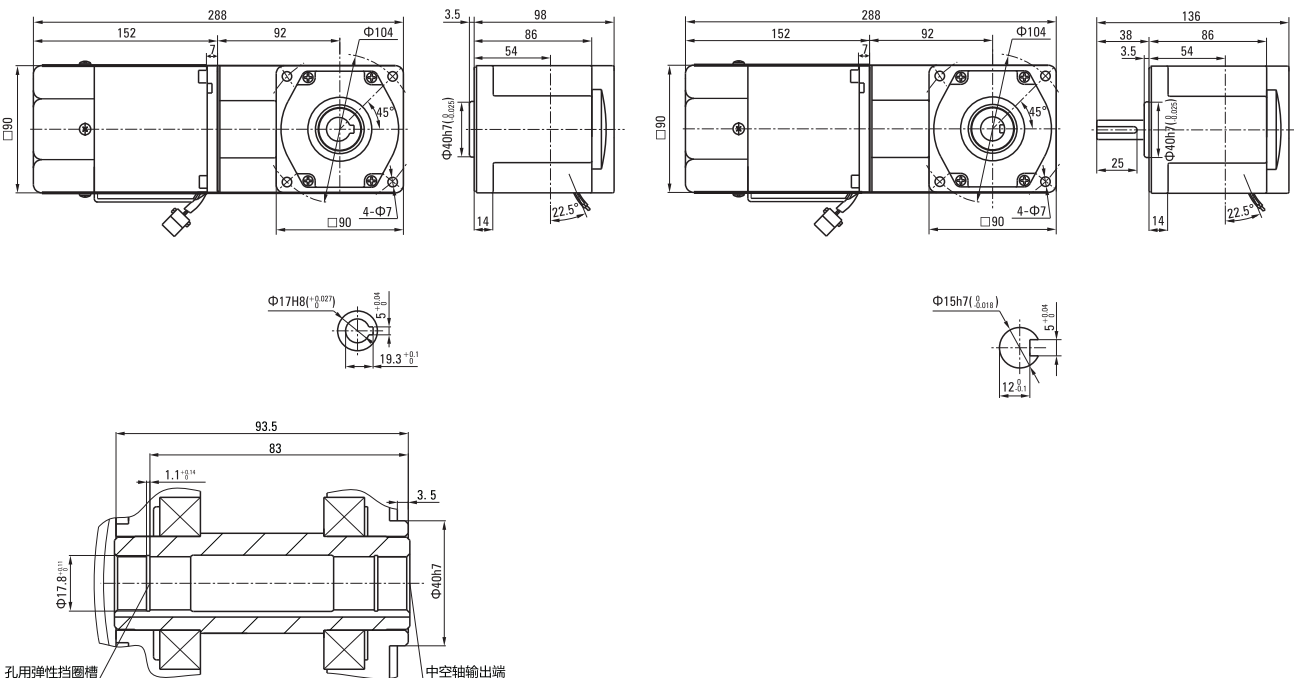
- 减速器·中间减速器另售。 • 电动机型号的□中为表示带端子箱型的记号(T)。  
Gearhead and mid-gearbox can be sold separately. Enter the code that represents the terminal box type (T) in the box (□) within the model name.
- 减速器型号的□中为减速比的数值。 □ 色表示与电动机同一方向运转，其他则为相反方向。  
Enter the gear ratio in the box (□) within the model name.  
The colored background □ indicates the same rotating direction of the motor while the rotating direction of others are opposite.
- 转速是以电动机的同步转速 (50Hz:1500r/min、60Hz:1800r/min) 为基准除以减速比而算出来的数值。实际转速将随负载大小变化而比所示数值减少2%~20%左右。  
The speed is calculated by dividing the motor's synchronous speed (50Hz:1500r/min、60Hz:1800r/min) by the gear ratio. The actual speed is 2%~20% less than the displayed value, depending on the size of the load.
- 希望以大于下表的减速比进行进一步减速时，可在电动机与减速器之间安装减速比为10的中间减速器。这时的容许转矩为20N·m。  
To reduce the speed beyond the gear ratio in the table, attach a mid-gearbox (gear ratio:10) between the gearhead and motor. In that case, the permissible torque is 20N·m.

## ■ 容许力矩单位 Allowance Torque Unit: 上段 Upside (N.m) / 下段 Belowside (kgf.cm)

机型Type 电动机/减速器 Motor/Gearhead	减速比Gear Ratio	3	3.6	5	6	7.5	9	12.5	15	18	25	30	3.6	50	60	75	90	100	120	150	180	
																						转速Speed r/min
5K120RGU-AF□	容许力矩 Allowance Torque	50Hz	1.70	2.05	2.84	3.41	4.73	5.68	7.89	9.47	11.4	15.8	18.9	20.0	20.0	20.0	20.0	20.0	20.0	20.0	20.0	20.0
5K120RGU-EF□	5GU□RC	60Hz	17.4	20.9	29.0	34.8	48.3	58.0	80.5	96.6	116	161	193	200	200	200	200	200	200	200	200	200
5K120RGU-CF□	5GU□RT	50Hz	1.37	1.65	2.29	2.75	3.82	4.58	6.36	7.64	9.16	12.7	15.3	16.5	20.0	20.0	20.0	20.0	20.0	20.0	20.0	20.0
5K120RGU-HF□	5GU□RT	60Hz	14.0	16.8	23.4	28.0	39.0	46.7	64.9	77.9	93.5	130	156	168	200	200	200	200	200	200	200	200

## ■ 调速尺寸图 Speed Control Type Drawing

5K120RGU-AF□/5GU□RC 5K120RGU-EF□/5GU□RC	5K120RGU-CF□/5GU□RC 5K120RGU-HF□/5GU□RC	5K120RGU-AF□/5GU□RT 5K120RGU-EF□/5GU□RT	5K120RGU-CF□/5GU□RT 5K120RGU-HF□/5GU□RT
--	--	--	--



注：接插件配标准型调速器 Note: The connector is for standard speed controller



# 调速电动机 SPEED ADJUSTABLE MOTOR

120W □104mm



## 规格 Specs 连续额定 Cont. Rated

型号Model · 类型 Type 导线型 Lead Wire Type		最大 输出功率 Output power W	电压 Voltage V	频率 Frequency Hz	调速范围 Speed Control Range r/min	容许转矩 Allowance Torque		启动转矩 Starting Torque mN.m	电流 Current A	电容器容量 Capacitor μF
齿轮轴型 Pinion Shaft	圆轴型 Round Shaft					1200r/min mN.m	90r/min mN.m			
6IK120RGU-AF	6IK120RA-AF	120	1ph 100	50	90~1350	750	360	530	2.10	30
					90~1650					
6IK120RGU-EF	6IK120RA-EF	120	1ph 110	60	90~1650	750	360	520	1.70	20
			1ph 120						1.80	
6IK120RGU-CF	6IK120RA-CF	120	1ph 220	50	90~1350	750	330	530	0.95	8.0
			1ph 230							
6IK120RGU-HF	6IK120RA-HF	120	1ph 220	60	90~1650	750	360	530	0.95	8.0
			1ph 230						1.00	

- 各种安全规格以电动机铭牌上的型号取得认证。  
When the motor is approved under various safety standards, the model name on the nameplate is the approved model name.
- 注：“-A”型号中电压为110V时，配置电容器容量以实际铭牌为准。  
Note：“-A” it means the voltage 110v,the assembly capacitor vaule it is according the labe.

## 种类 Type

### ●电动机 Motor

机型 Type	型号Model	
	齿轮轴型 Pinion Shaft	圆轴型 Round Shaft
导线型 Lead Wire Type	6IK120RGU-AF	6IK120RA-AF
	6IK120RGU-EF	6IK120RA-EF
	6IK120RGU-CF	6IK120RA-CF
	6IK120RGU-HF	6IK120RA-HF

### ●平行轴减速器（另售）Parallel Shaft Gearhead (Sold Separately)

减速器种类 Gearhead Type	减速器型号 Gearhead Model	减速比 Gear Ratio
长寿命●低噪音 Long Life ● Low Noise	6GU□K	3、3.6、5、6、7.5、9、 12.5、15、18、25、30、 36、50、60、75、90、 100、120、150、180、200

- 减速器型号的□中为减速比的数值  
Enter the gear ratio in the box ( □ ) within the model name

## ■ 装有减速器时的容许转矩 Gear Motor-Torque Table

- 减速器另售·中间减速器另售。电动机型号的□中为表示带端子箱型的记号(T)。  
Gearhead and mid-gearbox can be sold separately. Enter the code that represents the terminal box type (T) in the box (□) within the model name.
- 减速品型号的□中为减速比的数值。  
Enter the gear ratio in the box(□) within the model name.
- 色表示与电动机同一方向运转，其他则为相反方向。  
The colored background   indicates the same rotating direction of the motor while the rotating direction of others are opposite.
- 转速是以电动机的同步转速（50Hz：1500r/min、60Hz：1800r/min）为基准除以减速比而算出来的数值。实际转速将随负载大小变化所示数值减少2%~20%左右。  
The speed is calculated by dividing the motor's synchronous speed (50Hz：1500r/min、60Hz：1800r/min) by the gear ratio. The actual speed is 2%~20% less than the displayed value, depending on the size of the load.

## ■ 容许力矩单位 Allowance Torque Unit：上段 Upside ( N.m ) /下段 Belowside ( kgf.cm )

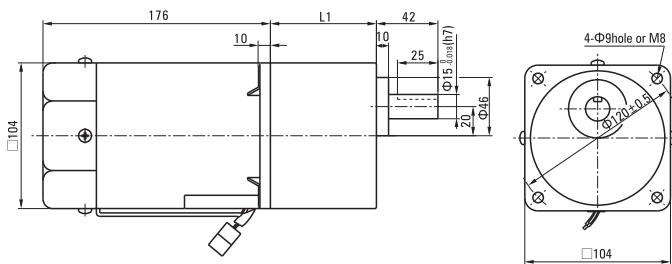
类型 Type 电动机/减速机 Motor/Gearhead	减速比 Gear Ratio		3	3.6	5	6	7.5	9	12.5	15	18	25	30	36	50	60	75	90	100	120	150	180	200		
	转速 Speed r/min	50Hz	500	417	300	250	200	166	120	100	83	60	50	41	30	25	20	16	15	12.5	10	8.3	7.5		
		60Hz	600	500	360	300	240	200	144	120	100	72	60	50	36	30	24	20	18	15	12	10	9		
6IK120RGU-AF□ 6IK120RGU-EF□ 6IK120RGU-CF□ 6IK120RGU-HF□	6GU□K	50Hz	2.3	2.7	3.8	4.5	5.6	6.8	8.5	10.2	12.2	15.3	18.4	22.1	30.7	36.8	40	40	40	40	40	40	40	40	
			23.4	27.5	38.7	45.9	57.1	69.3	86.7	104	124	156	187	225	313	375	400	400	400	400	400	400	400	400	400
		60Hz	1.8	2.2	3.0	3.6	4.6	5.5	6.8	8.2	9.8	12.4	14.9	17.8	24.8	29.7	37.1	40	40	40	40	40	40	40	40
			18.3	22.4	30.6	36.7	46.9	56.1	69.3	83.6	100	126	152	181	253	303	378	400	400	400	400	400	400	400	400

## ■ 外形图 (单位 mm) Dimensions(Unit mm)

减速器附有安装用螺丝 Mounting screws are included with gearhead.

### ● 导线型 Lead Wiring Type

重量 Weight：电动机 Motor：4.9kg      减速器 Gearhead：2.1kg

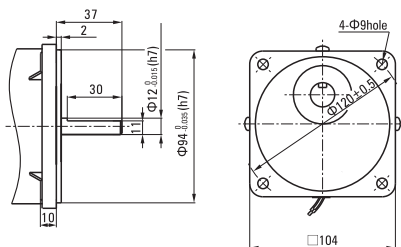


电动机型号 Motor Model	减速器型号 Gearhead Model	减速比 Gear Ratio	L1
6IK120RGU-AF 6IK120RGU-EF 6IK120RGU-CF 6IK120RGU-HF	6GU□K	3~200	72

- 减速器型号的□中为减速比的数值  
Enter the gear ratio in the box (□) within the model name

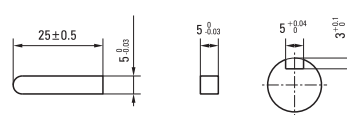
### ● 圆轴型的转轴部分 Shaft Section Of Round Shaft Type

除重量及轴部外电动机外形与齿轮轴型相同。  
Excluding weight and the shaft section motor shape are the same as those of the pinion shaft type.



### ● 键·键槽 (减速器附件)

Key · Keyway(Accessory of Gearhead)



## 弧锥直角 SPIRAL BEVEL RIGHT ANGLE



### 装有减速器时的容许转矩 Gear Motor-Torque Table

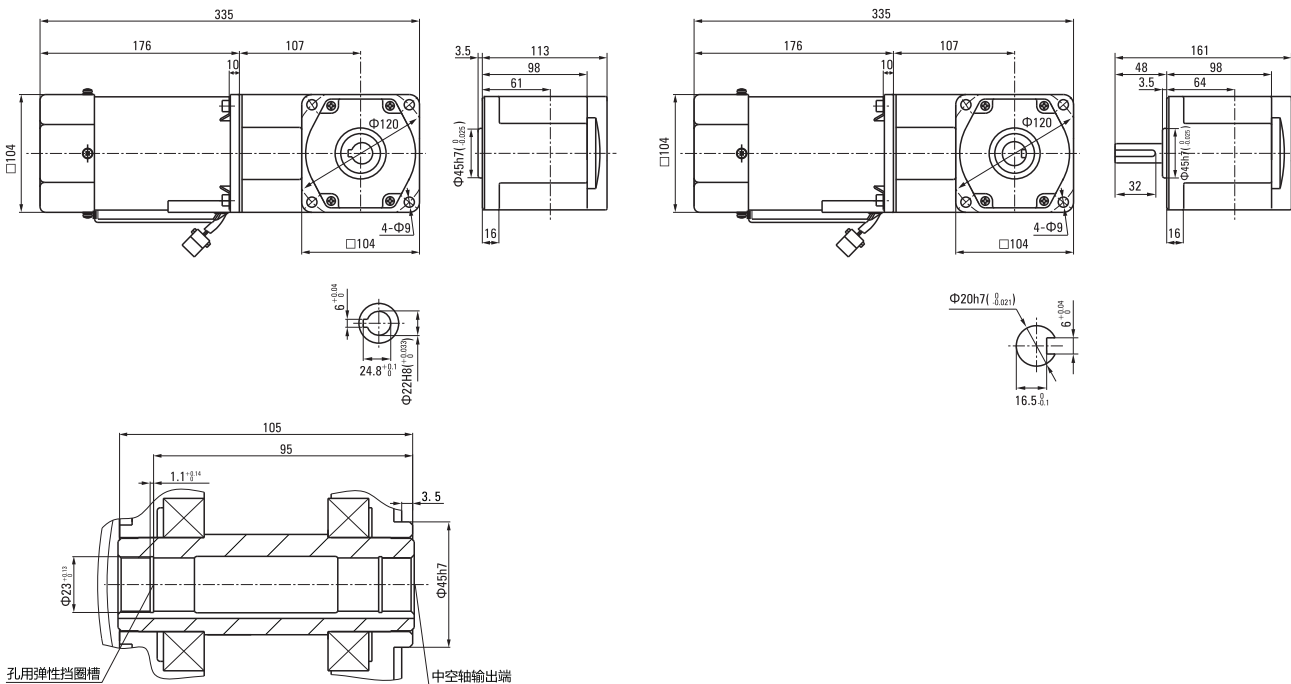
- 减速器-中间减速器另售。• 电动机型号的□中为表示带端子箱型的记号(T)。  
Gearhead and mid-gearbox can be sold separately. Enter the code that represents the terminal box type (T) in the box (□) within the model name.
- 减速器型号的□中为减速比的数值。□色表示与电动机同一方向运转，其他则为相反方向。  
Enter the gear ratio in the box (□) within the model name.  
The colored background □ indicates the same rotating direction of the motor while the rotating direction of others are opposite.
- 转速是以电动机的同步转速 (50Hz:1500r/min、60Hz:1800r/min) 为基准除以减速比而算出来的数值。实际转速将随负载大小变化而比所示数值减少2%~20%左右。  
The speed is calculated by dividing the motor's synchronous speed (50Hz:1500r/min、60Hz:1800r/min) by the gear ratio. The actual speed is 2%~20% less than the displayed value, depending on the size of the load.
- 希望以大于下表的减速比进行进一步减速时，可在电动机与减速器之间安装减速比为10的中间减速器。这时的容许转矩为60N·m。  
To reduce the speed beyond the gear ratio in the table, attach a mid-gearbox (gear ratio:10) between the gearhead and motor. In that case, the permissible torque is 60N·m.

### 容许力矩单位 Allowance Torque Unit: 上段 Upside (N.m) / 下段 Belowside (kgf.cm)

机型Type 电动机/减速器 Motor/Gearhead	减速比Gear Ratio	容许力矩 Allowance Torque																				
		3	3.6	5	6	7.5	9	12.5	15	18	25	30	3.6	50	60	75	90	100	120	150	180	
6IK120RGU-AF□ 6IK120RGU-EF□ 6IK120RGU-CF□ 6IK120RGU-HF□	转速Speed r/min	50Hz	500	417	300	250	200	166	120	100	83	60	50	417	30	25	20	16	15	12	10	8
		60Hz	600	500	360	300	240	200	144	120	100	72	60	500	36	30	24	20	18	15	12	10
6IK120RGU-AF□ 6IK120RGU-EF□ 6IK120RGU-CF□ 6IK120RGU-HF□	6GU□RC 6GU□RT	50Hz	1.70	2.05	2.84	3.41	4.26	5.68	7.89	9.47	11.4	15.8	18.9	22.7	28.4	34.1	42.6	51.1	56.8	60.0	60.0	60.0
		60Hz	1.37	1.65	2.29	2.75	3.44	4.58	6.36	7.64	9.16	12.7	15.3	18.3	22.9	27.5	34.4	41.2	45.8	55.0	60.0	60.0
		60Hz	14.0	16.8	23.4	28.0	35.1	46.7	64.9	77.9	93.5	130	156	187	234	280	351	421	467	561	600	600

### 调速尺寸图 Speed Control Type Drawing

6IK120RGU-AF□/6GU□RC 6IK120RGU-EF□/6GU□RC	6IK120RGU-CF□/6GU□RC 6IK120RGU-HF□/6GU□RC	6IK120RGU-AF□/6GU□RT 6IK120RGU-EF□/6GU□RT	6IK120RGU-CF□/6GU□RT 6IK120RGU-HF□/6GU□RT
--	--	--	--



注：接插件配标准型调速器 Note: The connector is for zhong

## 调速电动机 SPEED ADJUSTABLE MOTOR

■ 140W    □ 104mm



### 规格 Specs 连续额定 Cont. Rated

型号Model · 类型 Type 导线型 Lead Wire Type		最大 输出功率 Output power W	电压 Voltage V	频率 Frequency Hz	调速范围 Speed Control Range r/min	容许转矩 Allowance Torque		启动转矩 Starting Torque mN.m	电流 Current A	电容器容量 Capacitor μF
齿轮轴型 Pinion Shaft	圆轴型 Round Shaft					1200r/min mN.m	90r/min mN.m			
6IK140RGU-AF	6IK140RA-AF	140	1ph 100	50	90~1350	830	420	620	2.70	35
				60	90~1650				3.00	
6IK140RGU-EF	6IK140RA-EF	140	1ph 110	60	90~1650	830	450	620	1.80	25
			1ph 120						1.95	
6IK140RGU-CF	6IK140RA-CF	140	1ph 220	50	90~1350	830	420	620	1.05	10
			1ph 230						1.15	
6IK140RGU-HF	6IK140RA-HF	140	1ph 220	60	90~1650	830	450	620	1.05	10
			1ph 230						1.15	

- 各种安全规格以电动机铭牌上的型号取得认证。  
When the motor is approved under various safety standards, the model name on the nameplate is the approved model name.
- 注：“-A”型号中电压为110V时，配置电容器容量以实际铭牌为准。  
Note:“-A” it means the voltage 110v,the assembly capacitor vaule it is according the labe.

### 种类 Type

- 电动机 Motor

机型 Type	型号Model	
	齿轮轴型 Pinion Shaft	圆轴型 Round Shaft
导线型 Lead Wire Type	6IK140RGU-AF	6IK140RA-AF
	6IK140RGU-EF	6IK140RA-EF
	6IK140RGU-CF	6IK140RA-CF
	6IK140RGU-HF	6IK140RA-HF

- 平行轴减速器（另售） Parallel Shaft Gearhead (Sold Separately)

减速器种类 Gearhead Type	减速器型号 Gearhead Model	减速比 Gear Ratio
长寿命●低噪音 Long Life ● Low Noise	6GU□K	3、3.6、5、6、7.5、9、 12.5、15、18、25、30、 36、50、60、75、90、 100、120、150、180、200

- 减速器型号的□中为减速比的数值  
Enter the gear ratio in the box ( □ ) within the model name

## ■ 装有减速器时的容许转矩 Gear Motor-Torque Table

- 减速器另售,中间减速器另售。电动机型号的□中为表示带端子箱型的记号(T)。  
Gearhead and mid-gearbox can be sold separately. Enter the code that represents the terminal box type (T) in the box (□) within the model name.
- 减速品型号的□中为减速比的数值。  
Enter the gear ratio in the box(□) within the model name.
- □色表示与电动机同一方向运转,其他则为相反方向。  
The colored background □ indicates the same rotating direction of the motor while the rotating direction of others are opposite.
- 转速是以电动机的同步转速(50Hz:1500r/min、60Hz:1800r/min)为基准除以减速比而算出来的数值。实际转速将随负载大小变化所示数值减少2%~20%左右。  
The speed is calculated by dividing the motor's synchronous speed (50Hz:1500r/min、60Hz:1800r/min) by the gear ratio. The actual speed is 2%~20% less than the displayed value, depending on the size of the load.

## ■ 容许力矩单位 Allowance Torque Unit : 上段 Upside ( N.m ) /下段 Belowside ( kgf.cm )

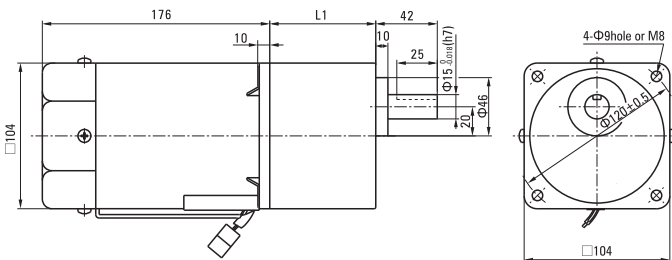
类型 Type 电动机/减速机 Motor/Gearhead	减速比 Gear Ratio		3	3.6	5	6	7.5	9	12.5	15	18	25	30	36	50	60	75	90	100	120	150	180	200		
	转速 Speed r/min	50Hz	500	417	300	250	200	166	120	100	83	60	50	41	30	25	20	16	15	12.5	10	8.3	7.5		
		60Hz	600	500	360	300	240	200	144	120	100	72	60	50	36	30	24	20	18	15	12	10	9		
6IK140RGU-AF 6IK140RGU-EF 6IK140RGU-CF 6IK140RGU-HF	6GU□K	50Hz	2.6	3.1	4.4	5.2	5.2	6.6	9.9	11.8	14.2	17.8	21.4	25.7	35.6	40	40	40	40	40	40	40	40	40	
			26.5	31.6	44.8	53.0	53.0	80.6	101	120	144	181	218	262	263	400	400	400	400	400	400	400	400	400	400
		60Hz	2.1	2.5	3.5	4.2	4.2	6.3	7.9	9.5	11.4	14.4	17.2	20.7	28.7	34.5	40	40	40	40	40	40	40	40	40
			21.4	25.5	35.7	42.8	42.8	64.2	80.6	96.9	116	147	175	211	292	352	400	400	400	400	400	400	400	400	400

## ■ 外形图 (单位 mm) Dimensions(Unit mm)

减速器附有安装用螺丝 Mounting screws are included with gearhead.

### ● 导线型 Lead Wiring Type

重量 Weight : 电动机 Motor : 5.1kg      减速器 Gearhead : 2.1kg

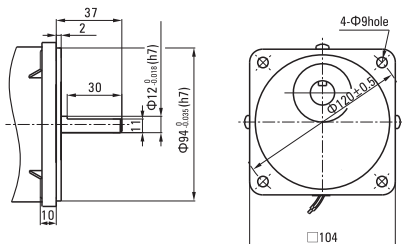


电动机型号 Motor Model	减速器型号 Gearhead Model	减速比 Gear Ratio	L1
6IK140RGU-AF 6IK140RGU-EF 6IK140RGU-CF 6IK140RGU-HF	6GU□K	3~200	72

- 减速器型号的□中为减速比的数值  
Enter the gear ratio in the box (□) within the model name

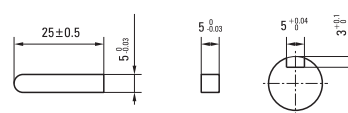
### ● 圆轴型的转轴部分 Shaft Section Of Round Shaft Type

除重量及轴部外电动机外形与齿轮轴型相同。  
Excluding weight and the shaft section motor shape are the same as those of the pinion shaft type.



### ● 键·键槽 (减速器附件)

Key · Keyway (Accessory of Gearhead)



## 弧锥直角 SPIRAL BEVEL RIGHT ANGLE



### 装有减速器时的容许转矩 Gear Motor-Torque Table

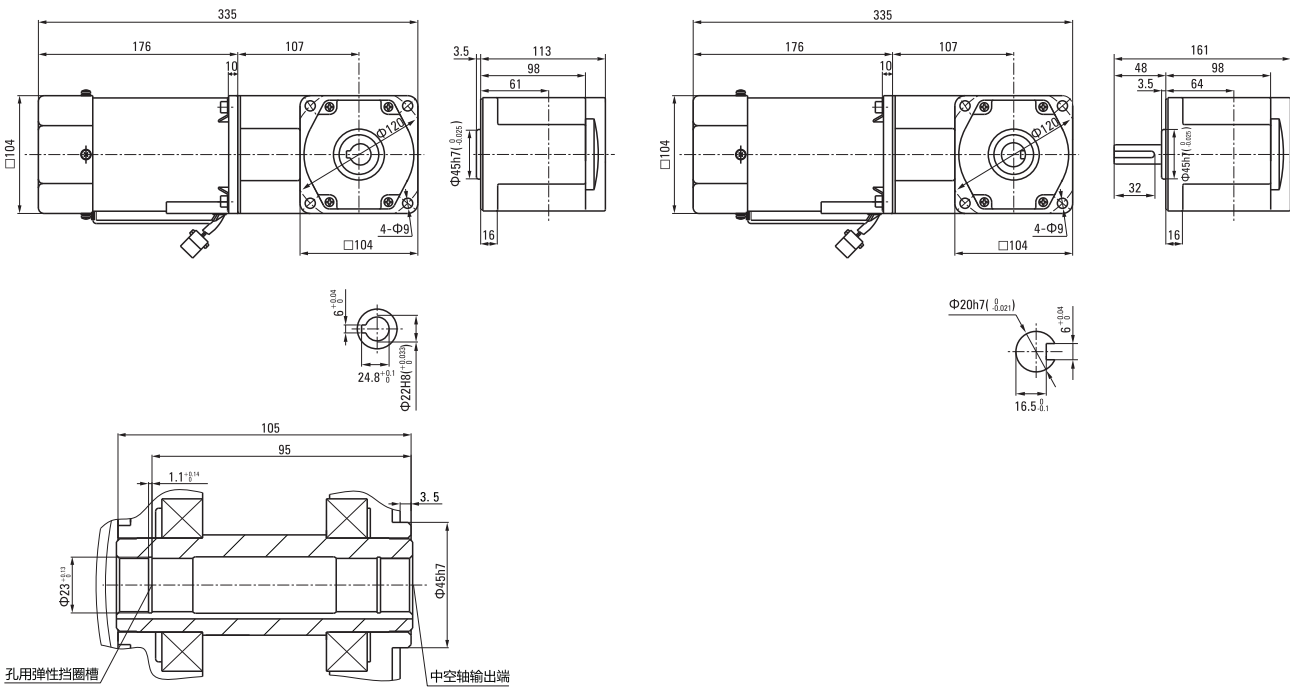
- 减速器-中间减速器另售。• 电动机型号的□中为表示带端子箱型的记号(T)。  
Gearhead and mid-gearbox can be sold separately. Enter the code that represents the terminal box type (T) in the box (□) within the model name.
- 减速器型号的□中为减速比的数值。□色表示与电动机同一方向运转，其他则为相反方向。  
Enter the gear ratio in the box (□) within the model name.  
The colored background □ indicates the same rotating direction of the motor while the rotating direction of others are opposite.
- 转速是以电动机的同步转速 (50Hz:1500r/min、60Hz:1800r/min) 为基准除以减速比而算出来的数值。实际转速将随负载大小变化而比所示数值减少2%~20%左右。  
The speed is calculated by dividing the motor's synchronous speed (50Hz:1500r/min、60Hz:1800r/min) by the gear ratio. The actual speed is 2%~20% less than the displayed value, depending on the size of the load.
- 希望以大于下表的减速比进行进一步减速时，可在电动机与减速器之间安装减速比为10的中间减速器。这时的容许转矩为60N·m。  
To reduce the speed beyond the gear ratio in the table, attach a mid-gearbox (gear ratio:10) between the gearhead and motor. In that case, the permissible torque is 60N·m.

### 容许力矩单位 Allowance Torque Unit: 上段 Upside (N.m) / 下段 Belowside (kgf.cm)

机型Type 电动机/减速器 Motor/Gearhead	减速比Gear Ratio	3	3.6	5	6	7.5	9	12.5	15	18	25	30	3.6	50	60	75	90	100	120	150	180	
																						转速Speed r/min
6IK140RGU-AF□ 6IK140RGU-EF□ 6IK140RGU-CF□ 6IK140RGU-HF□	容许力矩 Allowance Torque	50Hz	500	417	300	250	200	166	120	100	83	60	50	417	30	25	20	16	15	12	10	8
		60Hz	600	500	360	300	240	200	144	120	100	72	60	500	36	30	24	20	18	15	12	10
6IK140RGU-AF□/6GU□RC 6IK140RGU-EF□/6GU□RC 6IK140RGU-CF□/6GU□RT 6IK140RGU-HF□/6GU□RT	容许力矩 Allowance Torque	50Hz	1.99	2.39	3.31	3.98	4.97	6.63	9.21	11.0	13.3	18.4	22.1	26.5	33.1	39.8	49.7	59.6	60.0	60.0	60.0	60.0
		60Hz	1.60	1.92	2.67	3.21	4.01	5.34	7.42	8.91	10.7	14.8	17.8	21.4	26.7	32.1	40.1	48.1	53.4	60.0	60.0	60.0

### 调速尺寸图 Speed Control Type Drawing

6IK140RGU-AF□/6GU□RC 6IK140RGU-EF□/6GU□RC	6IK140RGU-CF□/6GU□RC 6IK140RGU-HF□/6GU□RC	6IK140RGU-AF□/6GU□RT 6IK140RGU-EF□/6GU□RT	6IK140RGU-CF□/6GU□RT 6IK140RGU-HF□/6GU□RT
--	--	--	--



注：接插件配标准型调速器 Note: The connector is for standard speed controller

## 调速电动机 SPEED ADJUSTABLE MOTOR

■ 200W □ 104mm



### 规格 Specs 连续额定 Cont. Rated

型号Model · 类型 Type 导线型 Lead Wire Type		最大 输出功率 Output power W	电压 Voltage V	频率 Frequency Hz	调速范围 Speed Control Range r/min	容许转矩 Allowance Torque		启动转矩 Starting Torque mN.m	电流 Current A	电容器容量 Capacitor μF
齿轮轴型 Pinion Shaft	圆轴型 Round Shaft					1200r/min mN.m	90r/min mN.m			
6IK200RGU-CF	6IK200RA-CF	200	1ph 220	50	90~1350	920	500	1000	1.40	10
			1ph 230							
6IK200RGU-HF	6IK200RA-HF	200	1ph 220	60	90~1650	920	500	1000	1.40	10
			1ph 230							

- 各种安全规格以电动机铭牌上的型号取得认证。  
When the motor is approved under various safety standards, the model name on the nameplate is the approved model name.
- 注：“-A”型号中电压为110V时，配置电容器容量以实际铭牌为准。  
Note:“-A” it means the voltage 110v,the assembly capacitor vaule it is according the labe.

### 种类 Type

#### ● 电动机 Motor

机型 Type	型号Model	
	齿轮轴型 Pinion Shaft	圆轴型 Round Shaft
导线型 Lead Wire Type	6IK200RGU-CF	6IK200RA-CF
	6IK200RGU-HF	6IK200RA-HF

#### ● 平行轴减速器（另售） Parallel Shaft Gearhead (Sold Separately)

减速器种类 Gearhead Type	减速器型号 Gearhead Model	减速比 Gear Ratio
长寿命●低噪音 Long Life ● Low Noise	6GU□K	3、3.6、5、6、7.5、9、 12.5、15、18、25、30、 36、50、60、75、90、 100、120、150、180、200

- 减速器型号的□中为减速比的数值  
Enter the gear ratio in the box ( □ ) within the model name

## ■ 装有减速器时的容许转矩 Gear Motor-Torque Table

- 减速器另售·中间减速器另售。  
Gearhead are sold separately. Decimal gearheads are not available.
- 减速品型号的□中为减速比的数值。  
Enter the gear ratio in the box(□) within the model name.
- □色表示与电动机同一方向运转，其他则为相反方向。  
The colored background □ indicates the same rotating direction of the motor while the rotating direction of others are opposite.
- 转速是以电动机的同步转速（50Hz：1500r/min、60Hz：1800r/min）为基准除以减速比而算出来的数值。实际转速将随负载大小变化所示数值减少2%~20%左右。  
The speed is calculated by dividing the motor's synchronous speed（50Hz：1500r/min、60Hz：1800r/min）by the gear ratio. The actual speed is 2%~20% less than the displayed value, depending on the size of the load.

## ■ 容许力矩单位 Allowance Torque Unit：上段 Upside ( N.m ) /下段 Belowside ( kgf.cm )

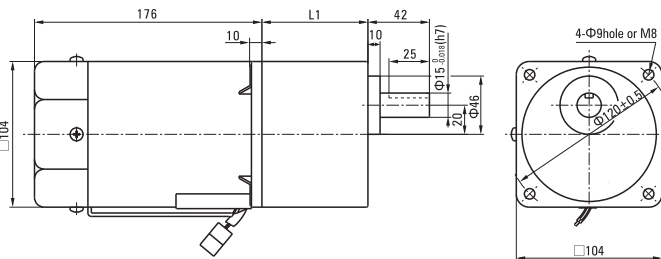
类型 Type 电动机/减速机 Motor/Gearhead	减速比 Gear Ratio		3	3.6	5	6	7.5	9	12.5	15	18	25	30	36	50	60	75	90	100	120	150	180	200	
	转速 Speed r/min	50Hz	500	417	300	250	200	166	120	100	83	60	50	42	30	25	20	16	15	12.5	10	8.3	7.5	
		60Hz	600	500	360	300	240	200	144	120	100	72	60	50	36	30	24	20	18	15	12	10	9	
6IK200RGU-AF□ 6IK200RGU-EF□ 6IK200RGU-CF□ 6IK200RGU-HF□ 6IK200RGU-SF□	6GU□K	50Hz	3.71	4.46	6.19	7.43	9.28	11.1	13.9	16.7	20.1	25.2	30.3	36.3	40	40	40	40	40	40	40	40	40	
			37.9	45.5	63.1	75.8	94.7	114	142	171	205	257	309	370	400	400	400	400	400	400	400	400	400	400
		60Hz	2.99	3.59	4.99	5.99	7.49	8.98	11.2	13.5	16.2	20.3	24.4	29.3	40	40	40	40	40	40	40	40	40	40
			30.6	36.7	50.9	61.1	76.4	91.7	115	138	165	207	249	299	400	400	400	400	400	400	400	400	400	400

## ■ 外形图 (单位 mm) Dimensions(Unit mm)

减速器附有安装用螺丝 Mounting screws are included with gearhead.

### ● 导线型 Lead Wiring Type

重量 Weight：电动机 Motor：5.1kg      减速器 Gearhead：2.1kg

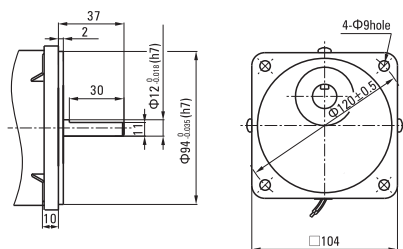


电动机型号 Motor Model	减速器型号 Gearhead Model	减速比 Gear Ratio	L1
6IK200RGU-CF 6IK200RGU-HF	6GU□K	3~200	72

● 减速器型号的□中为减速比的数值  
Enter the gear ratio in the box (□) within the model name

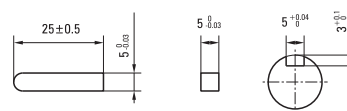
### ● 圆轴型的转轴部分 Shaft Section Of Round Shaft Type

除重量及轴部外电动机外形与齿轮轴型相同。  
Excluding weight and the shaft section motor shape are the same as those of the pinion shaft type.



### ● 键·键槽 (减速器附件)

Key · Keyway(Accessory of Gearhead)





## 弧锥直角 SPIRAL BEVEL RIGHT ANGLE



### ■ 装有减速器时的容许转矩 Gear Motor-Torque Table

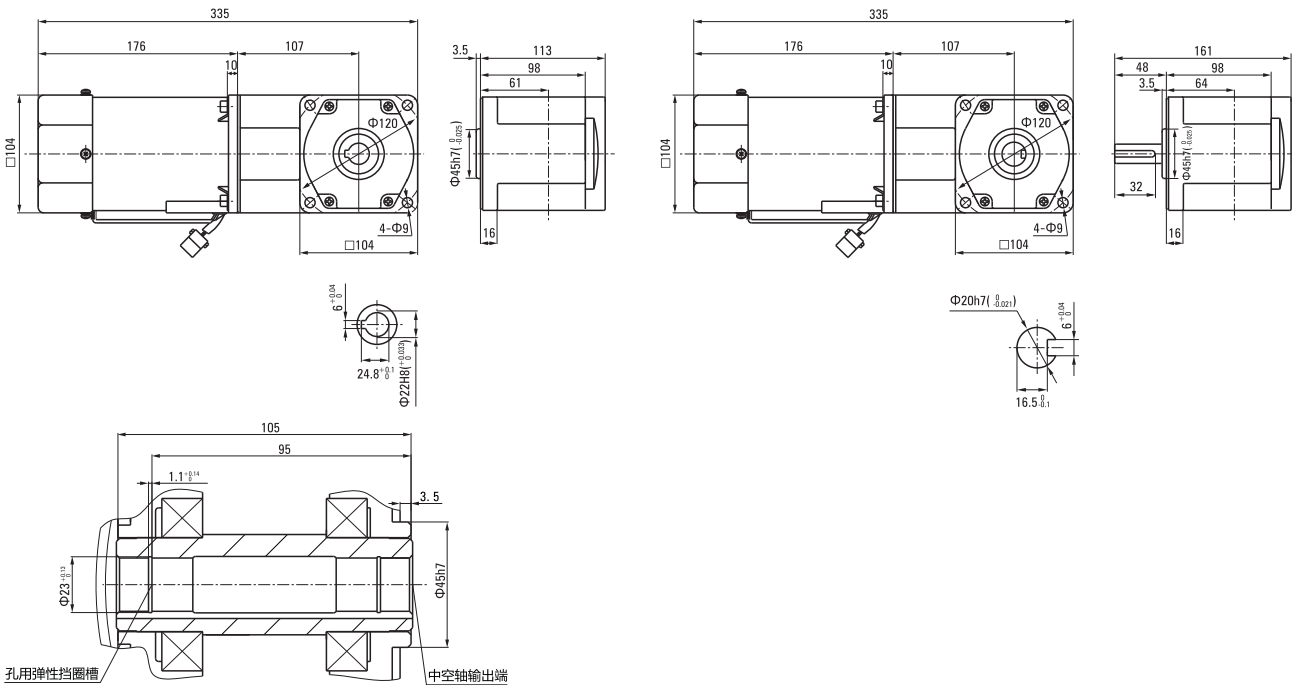
- 减速器-中间减速器另售。● 电动机型号的□中为表示带端子箱型的记号(T)。 Gearhead and mid-gearbox can be sold separately. Enter the code that represents the terminal box type (T) in the box (□) within the model name.
- 减速器型号的□中为减速比的数值。□ 色表示与电动机同一方向运转, 其他则为相反方向。 Enter the gear ratio in the box (□) within the model name. The colored background □ indicates the same rotating direction of the motor while the rotating direction of others are opposite.
- 转速是以电动机的同步转速 (50Hz:1500r/min、60Hz:1800r/min) 为基准除以减速比而算出来的数值。实际转速将随负载大小变化而比所示数值减少2%~20%左右。 The speed is calculated by dividing the motor's synchronous speed (50Hz:1500r/min、60Hz:1800r/min) by the gear ratio. The actual speed is 2%~20% less than the displayed value, depending on the size of the load.
- 希望以大于下表的减速比进行进一步减速时, 可在电动机与减速器之间安装减速比为10的中间减速器。这时的容许转矩为60N·m。 To reduce the speed beyond the gear ratio in the table, attach a mid-gearbox (gear ratio:10) between the gearhead and motor. In that case, the permissible torque is 60N·m.

### ■ 容许力矩单位 Allowance Torque Unit: 上段 Upside (N.m) / 下段 Belowside (kgf.cm)

机型Type 电动机/减速器 Motor/Gearhead	减速比Gear Ratio	转速Speed r/min	3	3.6	5	6	7.5	9	12.5	15	18	25	30	36	50	60	75	90	100	120	150	180	
			50Hz	500	417	300	250	200	166	120	100	83	60	50	42	30	25	20	16	15	12	10	8
60Hz	600	500	360	300	240	200	144	120	100	72	60	50	36	30	24	20	18	15	12	10			
6IK200RGU-AF□ 6IK200RGU-EF□ 6IK200RGU-CF□ 6IK200RGU-HF□ 6IK200RGU-SF□	6GU□RC 6GU□RT	容许力矩 Allowance Torque	50Hz	3.71	4.46	6.19	7.43	9.28	11.1	13.9	16.7	20.1	25.2	30.3	36.3	50.4	60.0	60.0	60.0	60.0	60.0	60.0	60.0
			60Hz	2.99	3.59	4.99	5.99	7.49	8.98	11.2	13.5	16.2	20.3	24.4	29.3	40.7	48.8	60.0	60.0	60.0	60.0	60.0	60.0
				30.6	36.7	50.9	61.1	76.4	91.7	115	138	165	207	249	299	415	498	600	600	600	600	600	600

### ■ 调速尺寸图 Speed Control Type Drawing

6IK200RGU-AF□/6GU□RC 6IK200RGU-EF□/6GU□RC	6IK200RGU-CF□/6GU□RC 6IK200RGU-HF□/6GU□RC	6IK200RGU-AF□/6GU□RT 6IK200RGU-EF□/6GU□RT	6IK200RGU-CF□/6GU□RT 6IK200RGU-HF□/6GU□RT
--	--	--	--



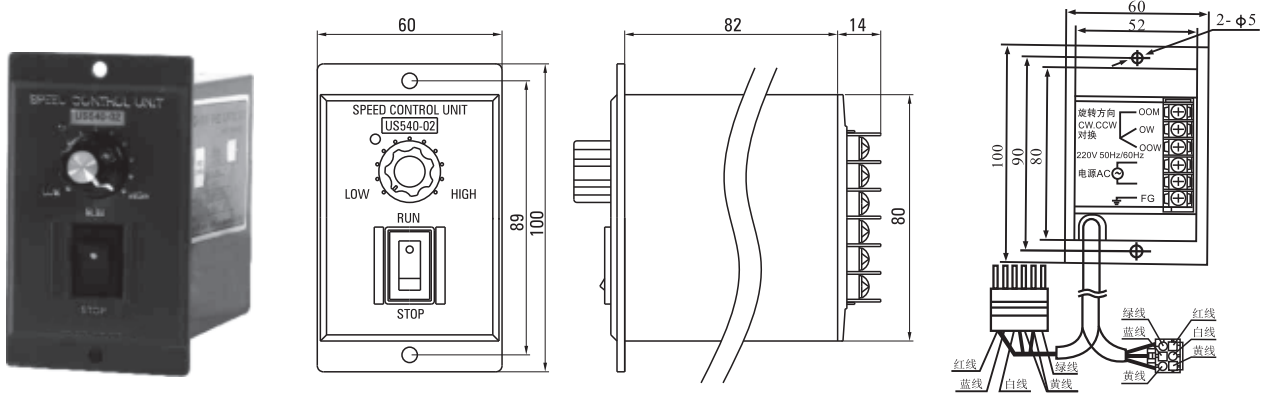
注: 接插件配标准型调速器 Note: The connector is for standard speed controller

# 调速驱动器 SPEED ADJUSTABLE MOTOR

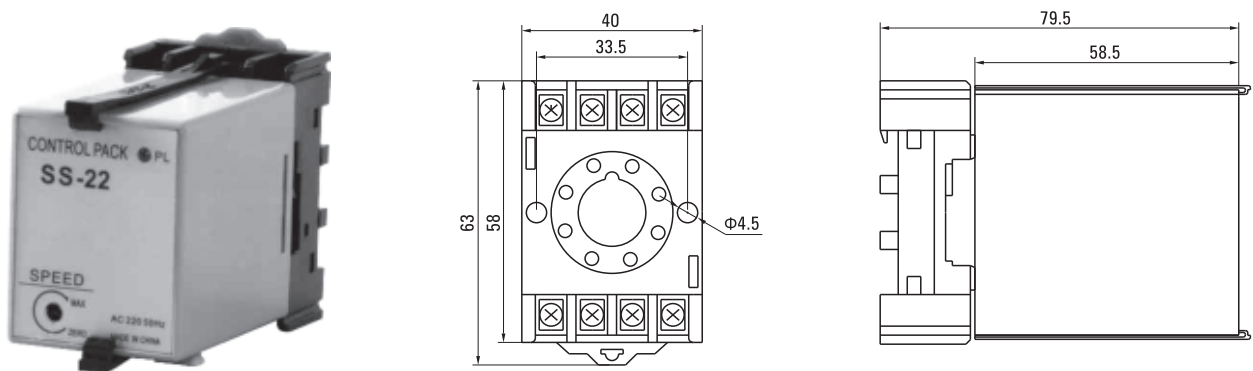
## ■ 控制器型号说明 Description Of Governor Model

<b>U</b>	<b>S</b>	<b>6</b>	<b>200</b>	<b>02</b>
调速器种类 Speed Controller Type U:组合型 U:Combination  S:分离型 S:Separation	调速器种类 Speed Controller Type S:速度控制器 S:Speed Governor	框号 Frame Number	功率 Power	电压 Voltage O1:单相110V50Hz O1:Single Phase 110V50Hz  O2:单相220V50Hz O2:Single Phase 220V50Hz

## ■ 组合型 Combination 正、反转变速 Clockwise And Anti-Clockwise Speed Change



## ■ 分离器 Separation 正、反转变速 Clockwise And Anti-Clockwise Speed Change



## ■ 调速器特性表 List Of Speed Governor Characteristics

参数 Parameter 型号Model	电压(V) Voltage(V)	频率(Hz) Voltage(Hz)	最大电流(A) Peak Current(A)	电机功率(W) Motor Power(W)	速度范围(r/min) Speed Range(r/min)	速度变速器 Speed Changer	速度应答器 Speed Responder	速度安定性 Speed Stability	工作环境温度 Working Ambient Temperature
US01	110V±10%	50/60	5	6~140	90/1350	3%	(0.5)	优 Excellent	-10°C~+50°C
US02	220V±10%			6~200	90/1650				
US01	110V±10%	50/60	5	6~140	90/1350	3%	(0.5)	优 Excellent	-10°C~+50°C
US02	220V±10%			6~200	90/1650				

# 专业 合作 共赢



传动设备应用解决方案专业供应商  
Professional Supplier For Transmission Equipments And Solution



**深圳市新立盈机电有限公司**  
**Shenzhen Xinliying Jidian Co., Ltd.**

Tel: 0755-29363635 23721539 29636353 29634691

Fax: 0755-29634692

Http://www.szxlyjd.com

E-mail: szxly8899@126.com

Add: 深圳市宝安区福永街道桥头社区榕树路2号港华兴工业园三区1栋6楼